

Recombinant Human TLN2 Protein (88-406 aa), His-tagged

Cat. No. TLN2-1736H Lot. No. (See product label)

SPECIFICATION

Product Overview	Recombinant Human TLN2 Protein (88-406 aa) is produced by Yeast expression system. This protein is fused with a 6xHis tag at the N-terminal. Research Area: Signal Transduction. Protein Description: Partial.
Species	Human
Source	Yeast
ProteinLength	88-406 aa
Description	As a major component of focal adhesion plaques that links integrin to the actin cytoskeleton, may play an important role in cell adhesion. Recruits PIP5K1C to focal adhesion plaques and strongly activates its kinase activity.
Form	Tris-based buffer, 50% glycerol
Molecular Mass	39.1 kDa
AA Sequence	RPQKIRMLDGSVKTVMVDDSKTVGELLVTICSRIGITNYEEYSLIQETIEEKKEEGTGT LKKDRTLLRDERKMEKLLKAKLHTDDDLNWL DHSRTFREQGV DENETLLRRKFFYS DQNVDSRDPVQLNLLYVQARD DILNGSHPV SFKACEFGGFQAQIQFGPHVEHKHK PGFLDLKEFLPKEYIKRGA EKRFQEHKNCGEMSEIEAKVKYVKLARSLR TYGVSFF LVKEKMKGKKNKLVPRLLGITKDSVMRVDEKTKEVLQEWPLTTVKRWAASPKSFTLD FGEYQESYYSVQTTEGEQISQLIAGYIDIILKKK

 Tel: 1-631-559-9269 1-516-512-3133

 Email: info@creative-biomart.com  Fax: 1-631-938-8127

 45-1 Ramsey Road, Shirley, NY 11967, USA

Purity	> 90% as determined by SDS-PAGE.
Notes	Repeated freezing and thawing is not recommended. Store working aliquots at 4 centigrade for up to one week.
Storage	The shelf life is related to many factors, storage state, buffer ingredients, storage temperature and the stability of the protein itself. Generally, the shelf life of liquid form is 6 months at -20 centigrade/-80 centigrade. The shelf life of lyophilized form is 12 months at -20 centigrade/-80 centigrade.
Concentration	A hardcopy of COA with reconstitution instruction is sent along with the products.

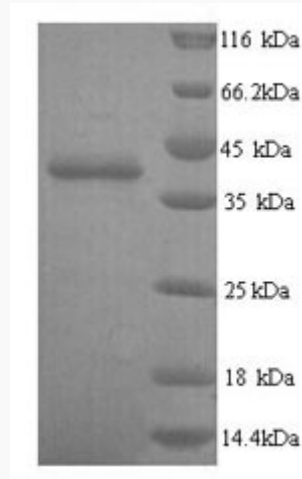
GENE INFORMATION

Gene Name	TLN2 talin 2 [Homo sapiens]
Official Symbol	TLN2
Synonyms	TLN2; talin 2; talin-2; ILWEQ; KIAA0320; DKFZp451B1011; DKFZp686I0976; DKFZp686K0979;
Gene ID	83660
mRNA Refseq	NM_015059
Protein Refseq	NP_055874
MIM	607349
UniProt ID	Q9Y4G6

 Tel: 1-631-559-9269 1-516-512-3133

 Email: info@creative-biomart.com  Fax: 1-631-938-8127

 45-1 Ramsey Road, Shirley, NY 11967, USA



(Tris-Glycine gel) Discontinuous SDS-PAGE (reduced) with 5% enrichment gel and 15% separation gel.

 Tel: 1-631-559-9269 1-516-512-3133

 Email: info@creative-biomart.com  Fax: 1-631-938-8127

 45-1 Ramsey Road, Shirley, NY 11967, USA