

Recombinant Human TLR1 Protein (Asn625-Lys786), N-His tagged

Cat. No. TLR1-1486H Lot. No. (See product label)

SPECIFICATION

Product Overview	Recombinant Human CD281/TLR1 (Asn625-Lys786) fused with the N-His tag was expressed in E. coli.
Species	Human
Source	E.coli
ProteinLength	Asn625-Lys786
Form	Lyophilized powder/frozen liquid
Molecular Mass	21.40 kDa
Purity	>90% as determined by SDS-PAGE.
Notes	For research use only.
Storage	Use a manual defrost freezer and avoid repeated freeze thaw cycles. Store at 2 to 8 centigrade for one week. Store at -20 to -80 centigrade for twelve months from the date of receipt.
Storage Buffer	0.01M PBS, pH 7.4, 0.02% NLS
Reconstitution	Reconstitute in sterile water for a stock solution.

 Tel: 1-631-559-9269 1-516-512-3133

 Email: info@creative-biomart.com  Fax: 1-631-938-8127

 45-1 Ramsey Road, Shirley, NY 11967, USA

Shipping

They are shipped out with dry ice/blue ice unless customers require otherwise.

GENE INFORMATION
Gene Name

TLR1 toll-like receptor 1 [Homo sapiens (human)]

Official Symbol

TLR1

Synonyms

TLR1; toll-like receptor 1; CD281; KIAA0012; rsc786; toll/interleukin-1 receptor-like protein; TIL; TIL. LPRS5; MGC104956; MGC126311; MGC126312; DKFZp54710610; DKFZp56410682;

Gene ID

7096

mRNA Refseq

NM_003263

Protein Refseq

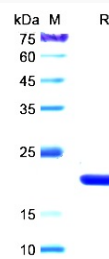
NP_003254

MIM

601194

UniProt ID

Q15399

SDS-PAGE


Tel: 1-631-559-9269 1-516-512-3133

Email: info@creative-biomart.com Fax: 1-631-938-8127

45-1 Ramsey Road, Shirley, NY 11967, USA