

## Recombinant Human TLR1 Protein (25-580 aa), His-tagged

Cat. No. TLR1-1815H Lot. No. (See product label)

### SPECIFICATION

|                         |  |
|-------------------------|--|
| <b>Product Overview</b> | Recombinant Human TLR1 Protein (25-580 aa) is produced by Yeast expression system. This protein is fused with a 6xHis tag at the N-terminal. Protein Description: Partial.   |
| <b>Species</b>          | Human  |
| <b>Source</b>           | Yeast  |
| <b>ProteinLength</b>    | 25-580 aa  |
| <b>Description</b>      | Participates in the innate immune response to microbial agents. Specifically recognizes diacylated and triacylated lipopeptides. Cooperates with TLR2 to mediate the innate immune response to bacterial lipoproteins or lipopeptides. Acts via MYD88 and TRAF6, leading to NF-kappa-B activation, cytokine secretion and the inflammatory response. |
| <b>Form</b>             | Tris-based buffer,50% glycerol   |
| <b>Molecular Mass</b>   | 65.2 kDa   |
| <b>AA Sequence</b>      | SEFLVDRSKNGLIHVPKDLSQKTTILNISQNYISELWTS DILSLSKLRILIIISHNRIQYLDI<br>SVFKFNQELEYLDLSHNKLVKISCHPTVNLKHL DLSFN AFDALPICKEFGNMSQLKFL<br>GLSTTHLEKSSVLP IAHNLNISKVLLVLGETYGEKEDPEGLQDFNTESLHIVFPTNKEFH<br>FILDVSVKTVANLELSNIKCVLEDNKCSYFLSILAKLQTNPKLSNLTNNIETTWN SFIRI<br>LQLVWHTTVWYFISISNVKLQGLDFRDFDYSGLKALS IHQVVSDVFGFPQSYIYEI                      |

Tel: 1-631-559-9269 1-516-512-3133

Email: [info@creative-biomart.com](mailto:info@creative-biomart.com) Fax: 1-631-938-8127

45-1 Ramsey Road, Shirley, NY 11967, USA

FSNMNIKNFTVSGTRMVHMLCPSKISPFLHLDFSNNLLTDTVFENCGLTELETILIQ  
 MNQLKELSKIAEMTTQMKSLLQQLDISQNSVSYDEKKGDCSWTKSLLSLNMSSNILTD  
 TIFRCLPPRIKVLDLHSNLIKISIPKQVVKLEALQELNVAFNSLTDLPGCGSFSSLSVLIID  
 HNSVSHPSADFFQSCQKMRSIKAGDNPFQCTCELGEFVKNIQVSSEVLEGWPDSY  
 KCDYPESYRGTTLLKDFHMSSELSCNIT

**Purity** > 90% as determined by SDS-PAGE.

**Notes** Repeated freezing and thawing is not recommended. Store working aliquots at 4 centigrade for up to one week.

**Storage** The shelf life is related to many factors, storage state, buffer ingredients, storage temperature and the stability of the protein itself. Generally, the shelf life of liquid form is 6 months at -20 centigrade/-80 centigrade. The shelf life of lyophilized form is 12 months at -20 centigrade/-80 centigrade.

**Concentration** A hardcopy of COA with reconstitution instruction is sent along with the products.

## GENE INFORMATION

**Gene Name** [TLR1 toll-like receptor 1 \[ Homo sapiens \]](#)

**Official Symbol** [TLR1](#)

**Synonyms** TLR1; CD281; KIAA0012; rsc786; TIL; TIL. LPRS5; MGC104956; MGC126311; MGC126312; DKFZp547I0610; DKFZp564I0682;

**Gene ID** [7096](#)

**mRNA Refseq** [NM\\_003263](#)

 Tel: 1-631-559-9269 1-516-512-3133

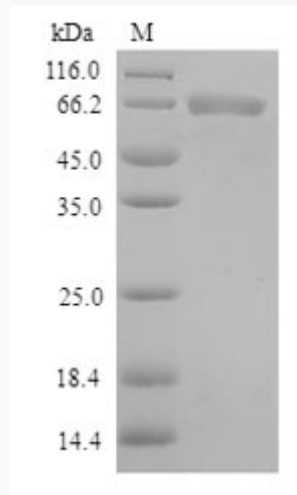
 Email: [info@creative-biomart.com](mailto:info@creative-biomart.com)  Fax: 1-631-938-8127

 45-1 Ramsey Road, Shirley, NY 11967, USA

**Protein Refseq** NP\_003254

**MIM** 601194

**UniProt ID** Q15399



(Tris-Glycine gel) Discontinuous SDS-PAGE (reduced) with 5% enrichment gel and 15% separation gel.

 Tel: 1-631-559-9269 1-516-512-3133

 Email: [info@creative-biomart.com](mailto:info@creative-biomart.com)  Fax: 1-631-938-8127

 45-1 Ramsey Road, Shirley, NY 11967, USA