

Recombinant Human TLR1, Fc Chimera

Cat. No. TLR1-685H **Lot. No.** (See product label)

SPECIFICATION

Product Overview	Recombinant Human TLR1 is produced in mouse <i>NSO/1 cells</i> . The extracellular domain of human TLR1 is fused to the Fc portion of human IgG1. MW=120kDa (SDS-PAGE).
Species	Human
Source	Mammalian Cells
Description	The protein encoded by this gene is a member of the Toll-like receptor (TLR) family which plays a fundamental role in pathogen recognition and activation of innate immunity. TLRs are highly conserved from <i>Drosophila</i> to humans and share structural and functional similarities. They recognize pathogen-associated molecular patterns (PAMPs) that are expressed on infectious agents, and mediate the production of cytokines necessary for the development of effective immunity.
Purity	≥95% (SDS-PAGE).
Endotoxin Content	<0.1EU/g purified protein (LAL test; Bio Whittaker).
Concentration	1mg/ml after reconstitution.
Formulation	Lyophilized. Contains PBS.
Reconstitution	Reconstitute with 50µsterile water. Further dilutions should be made with medium containing 5% fetal calf serum or a carrier protein.

 Tel: 1-631-559-9269 1-516-512-3133

 Email: info@creative-biomart.com  Fax: 1-631-938-8127

 45-1 Ramsey Road, Shirley, NY 11967, USA

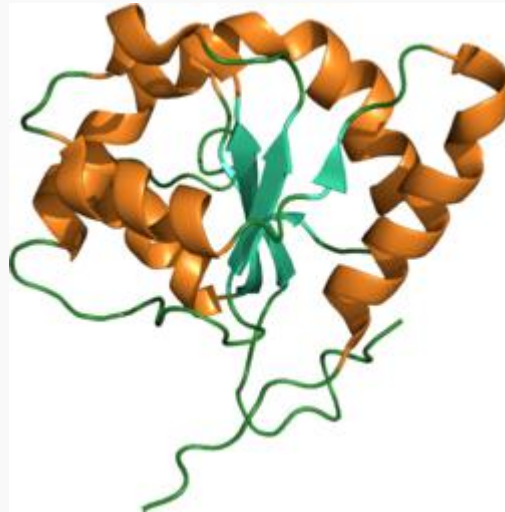
Stability	Stable for at least 6 months after receipt when stored at -20°C.
Storage	Long term storage: -20°C, short term storage: +4°C. After reconstitution, prepare aliquots and store at -20°C. Avoid freeze/thaw cycles.
GENE INFORMATION	
Gene Name	TLR1 toll-like receptor 1 [Homo sapiens]
Synonyms	TLR1; toll-like receptor 1; TIL; CD281; rsc786; KIAA0012; MGC104956; MGC126311; MGC126312; TIL. LPRS5; DKFZp547I0610; DKFZp564I0682
Gene ID	7096
mRNA Refseq	NM_003263
Protein Refseq	NP_003254
MIM	601194
UniProt ID	Q15399
Chromosome Location	4p14
Pathway	Toll-like receptor signaling pathway; Signaling in Immune system
Function	protein binding; receptor activity; transmembrane receptor activity

 Tel: 1-631-559-9269 1-516-512-3133

 Email: info@creative-biomart.com  Fax: 1-631-938-8127

 45-1 Ramsey Road, Shirley, NY 11967, USA

PDB rendering based
on 1fyv.



 Tel: 1-631-559-9269 1-516-512-3133

 Email: info@creative-biomart.com  Fax: 1-631-938-8127

 45-1 Ramsey Road, Shirley, NY 11967, USA