

Recombinant Human TLR2 Protein (Glu21-Leu590), N-His tagged

Cat. No. TLR2-1473H Lot. No. (See product label)

SPECIFICATION

| | |
|-------------------------|---|
| Product Overview | Recombinant Human CD282/TLR2 (Glu21-Leu590) fused with the N-His tag was expressed in E. coli. |
| Species | Human |
| Source | E.coli |
| ProteinLength | Glu21-Leu590 |
| Form | Lyophilized powder/frozen liquid |
| Molecular Mass | 66.66 kDa |
| Purity | >90% as determined by SDS-PAGE. |
| Notes | For research use only. |
| Storage | Use a manual defrost freezer and avoid repeated freeze thaw cycles. Store at 2 to 8 centigrade for one week. Store at -20 to -80 centigrade for twelve months from the date of receipt. |
| Storage Buffer | Lyophilized from a solution in PBS, pH 7.5, 0.02% NLS, 1mM EDTA, 4% trehalose, 1% mannitol. |

 Tel: 1-631-559-9269 1-516-512-3133

 Email: info@creative-biomart.com  Fax: 1-631-938-8127

 45-1 Ramsey Road, Shirley, NY 11967, USA

Reconstitution Reconstitute in sterile water for a stock solution.

Shipping They are shipped out with dry ice/blue ice unless customers require otherwise.

GENE INFORMATION

Gene Name TLR2 toll-like receptor 2 [Homo sapiens (human)]

Official Symbol TLR2

Synonyms TLR2; toll-like receptor 2; CD282; TIL4; toll/interleukin 1 receptor-like 4; toll/interleukin-1 receptor-like protein 4;

Gene ID 7097

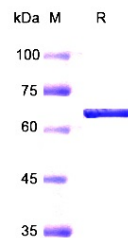
mRNA Refseq NM_003264

Protein Refseq NP_003255

MIM 603028

UniProt ID O60603

SDS-PAGE



 Tel: 1-631-559-9269 1-516-512-3133

 Email: info@creative-biomart.com  Fax: 1-631-938-8127

 45-1 Ramsey Road, Shirley, NY 11967, USA