

Recombinant Human TLR2 protein, GST-tagged

Cat. No. TLR2-30423TH **Lot. No.** (See product label)

SPECIFICATION

Product Overview	Recombinant Human TLR2(201 a.a. - 300 a.a.) fused with GST tag at N-terminal was expressed in Wheat Germ.
Species	Human
Source	Wheat Germ
ProteinLength	201-300 a.a.
Form	50 mM Tris-HCl, 10 mM reduced Glutathione, pH=8.0 in the elution buffer.
Molecular Mass	36.63 kDa
AA Sequence	SHLILHMKQHILLLEIFVDVTSSVECLELRDLDLDTFHFSELSTGETNSLIKKFTFRNVK ITDESLFQVMKLLNQISGLLELEFDDCTLNGVGNFRASDN
Applications	Enzyme-linked Immunoabsorbent Assay; Western Blot (Recombinant protein); Antibody Production; Protein Array
Notes	Best use within three months from the date of receipt of this protein.
Storage	Store at -80 centigrade. Aliquot to avoid repeated freezing and thawing.

GENE INFORMATION

 Tel: 1-631-559-9269 1-516-512-3133

 Email: info@creative-biomart.com  Fax: 1-631-938-8127

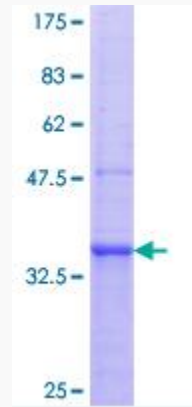
 45-1 Ramsey Road, Shirley, NY 11967, USA

Gene Name	TLR2 toll-like receptor 2 [Homo sapiens]
Official Symbol	TLR2
Synonyms	TLR2; toll-like receptor 2; CD282; TIL4; toll/interleukin 1 receptor-like 4; toll/interleukin-1 receptor-like protein 4;
Gene ID	7097
mRNA Refseq	NM_003264
Protein Refseq	NP_003255
MIM	603028
UniProt ID	O60603
Chromosome Location	4q32
Pathway	Activated TLR4 signalling, organism-specific biosystem; Amoebiasis, organism-specific biosystem; Amoebiasis, conserved biosystem; Beta defensins, organism-specific biosystem; Chagas disease (American trypanosomiasis), organism-specific biosystem; Chagas disease (American trypanosomiasis), conserved biosystem; Defensins, organism-specific biosystem;
Function	Gram-positive bacterial cell surface binding; lipopolysaccharide receptor activity; pattern recognition receptor activity; peptidoglycan binding; protein binding; protein heterodimerization activity; receptor activity; transmembrane signaling receptor activity; triacyl lipopeptide binding;

 Tel: 1-631-559-9269 1-516-512-3133

 Email: info@creative-biomart.com  Fax: 1-631-938-8127

 45-1 Ramsey Road, Shirley, NY 11967, USA



Tel: 1-631-559-9269 1-516-512-3133

Email: info@creative-biomart.com Fax: 1-631-938-8127

45-1 Ramsey Road, Shirley, NY 11967, USA