

# Recombinant Human TLR2 Protein, Myc/DDK-tagged, C13 and N15-labeled

**Cat. No.** TLR2-3358H    **Lot. No.** (See product label)

## SPECIFICATION

<b>Product Overview</b>	TLR2 MS Standard C13 and N15-labeled recombinant protein (NP_003255) with a C-terminal MYC/DDK tag, was expressed in HEK293 cells.
<b>Species</b>	Human
<b>Source</b>	HEK293
<b>Description</b>	The protein encoded by this gene is a member of the Toll-like receptor (TLR) family which plays a fundamental role in pathogen recognition and activation of innate immunity. TLRs are highly conserved from Drosophila to humans and share structural and functional similarities. This protein is a cell-surface protein that can form heterodimers with other TLR family members to recognize conserved molecules derived from microorganisms known as pathogen-associated molecular patterns (PAMPs). Activation of TLRs by PAMPs leads to an up-regulation of signaling pathways to modulate the host's inflammatory response. This gene is also thought to promote apoptosis in response to bacterial lipoproteins. This gene has been implicated in the pathogenesis of several autoimmune diseases. Alternative splicing results in multiple transcript variants.
<b>Molecular Mass</b>	89.8 kDa
<b>AA Sequence</b>	MPHTLWMVWVLGVIIISLSKEESSNQASLSCDRNGICKGSSGSLNSIPSGLTEAVKSL DLSNNRITYISNSDLQRCVNLQALVLTNSGINTIEEDSFSSLGSLHLDLSYNYLSNLS

 Tel: 1-631-559-9269    1-516-512-3133

 Email: [info@creative-biomart.com](mailto:info@creative-biomart.com)     Fax: 1-631-938-8127

 45-1 Ramsey Road, Shirley, NY 11967, USA

SSWFKPLSSLTFLNLLGNPYKTLGETSLFSLTKLQILRVGNMDTFTKIQRKDFAGLT  
 FLEELEIDASDLQSYEPKSLKSIQNVSHLILHMKQHILLEIFVDVTSSVECLELRDIDL  
 DTFHFSELSTGETNSLIKKFTFRNVKITDESLFQVMKLLNQISGLLELEFDDCTLNGVG  
 NFRASDNDRVIDPGKVETLTIRRLHIPRFYLFYDLSTLYSLTERVKRITVENSKVFLVP  
 CLLSQHLKSLEYLDLSENLMVEEYLKNSACEDAWPSLQTLILRQNHLASLEKTGETLL  
 TLKNLTNIDISKNSFHSMPETCQWPEKMKYLNLSSTRIHSVTGCIPKLEILDVSNNNL  
 NLFSLNLPQLKELYISRNKLMTLPDASLLPMLLVLKISRNAITTFSSKEQLDSFHTLKTLE  
 AGGNNFICSCEFLSFTQEQQALAKVLIDWPANYLDCSPSHVRGQQVQDVRLSVSEC  
 HRTALVSGMCCALFLLILLTGVLCHRFHGLWYMKMMWAWLQAKRKPRKAPSRNICY  
 DAFVSYSERDAYWVENLMVQELENFNPPFKLCLHKRDFIPGKWIIDNIIDSIEKSHKTV  
 FVLSENFVKSEWCKYELDFSHFRLFDENNDAAAILLEPIEKKAIPQRFCKLRKIMNTK  
 TYLEWPMDEAQREGFWVNLRAAIKSTRTRPLEQKLISEEDLAANDILDYKDDDDKV

<b>Purity</b>	> 80% as determined by SDS-PAGE and Coomassie blue staining
<b>Stability</b>	Stable for 3 months from receipt of products under proper storage and handling conditions.
<b>Storage</b>	Store at -80 centigrade. Avoid repeated freeze-thaw cycles.
<b>Concentration</b>	50 µg/mL as determined by BCA
<b>Storage Buffer</b>	100 mM glycine, 25 mM Tris-HCl, pH 7.3.

## GENE INFORMATION

<b>Gene Name</b>	TLR2 toll-like receptor 2 [ Homo sapiens (human) ]
<b>Official Symbol</b>	TLR2
<b>Synonyms</b>	TLR2; toll-like receptor 2; CD282; TIL4; toll/interleukin 1 receptor-like 4;



toll/interleukin-1 receptor-like protein 4;

**Gene ID** 7097

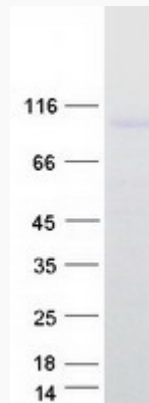
**mRNA Refseq** NM\_003264

**Protein Refseq** NP\_003255

**MIM** 603028

**UniProt ID** O60603

**SDS-PAGE**



Tel: 1-631-559-9269 1-516-512-3133

Email: [info@creative-biomart.com](mailto:info@creative-biomart.com) Fax: 1-631-938-8127

45-1 Ramsey Road, Shirley, NY 11967, USA