

## Recombinant Human TLR3 protein, His-tagged, Biotinylated

Cat. No. TLR3-1726H Lot. No. (See product label)

### SPECIFICATION

<b>Product Overview</b>	Biotinylated Recombinant Human TLR3 protein(Q6PCD4)(Ser23-Glu703), fused with C-terminal His tag, was expressed in HEK293.
<b>Species</b>	Human
<b>Source</b>	HEK293
<b>ProteinLength</b>	Ser23-Glu703
<b>Tag</b>	C-His
<b>Conjugation/Label</b>	Biotin
<b>Form</b>	Supplied as 0.22µm filtered solution in PBS (pH 7.4).
<b>Bio-activity</b>	Immobilized Biotinylated Human TLR3, His Tag at 0.5µg/ml (100µl/well) on the streptavidin precoated plate (5µg/ml). Dose response curve for Anti-TLR3 Antibody, hFc Tag with the EC50 of 6.6ng/ml determined by ELISA.
<b>Molecular Mass</b>	The protein has a predicted MW of 78.7 kDa. Due to glycosylation, the protein migrates to 100-120 kDa based on Tris-Bis PAGE result.
<b>Endotoxin</b>	Less than 1EU per µg by the LAL method.
<b>Purity</b>	> 95% as determined by Tris-Bis PAGE.

 Tel: 1-631-559-9269 1-516-512-3133

 Email: [info@creative-biomart.com](mailto:info@creative-biomart.com)  Fax: 1-631-938-8127

 45-1 Ramsey Road, Shirley, NY 11967, USA

**Storage** Valid for 12 months from date of receipt when stored at -80°C.; Recommend to aliquot the protein into smaller quantities for optimal storage. Please do not repeated freeze-thaw cycles.

**Reconstitution** It is recommended that sterile water be added to the vial to prepare a stock solution of 0.2 ug/ul. Centrifuge the vial at 4°C before opening to recover the entire contents.

**Conjugation** Biotin

## GENE INFORMATION

**Gene Name** TLR3 toll-like receptor 3 [ Homo sapiens ]

**Official Symbol** TLR3

**Synonyms** TLR3; toll-like receptor 3; CD283; IIAE2;

**Gene ID** 7098

**mRNA Refseq** NM\_003265

**Protein Refseq** NP\_003256

**MIM** 603029

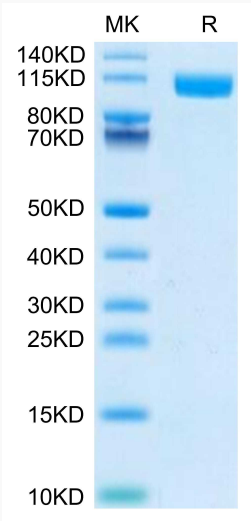
**UniProt ID** O15455

 Tel: 1-631-559-9269 1-516-512-3133

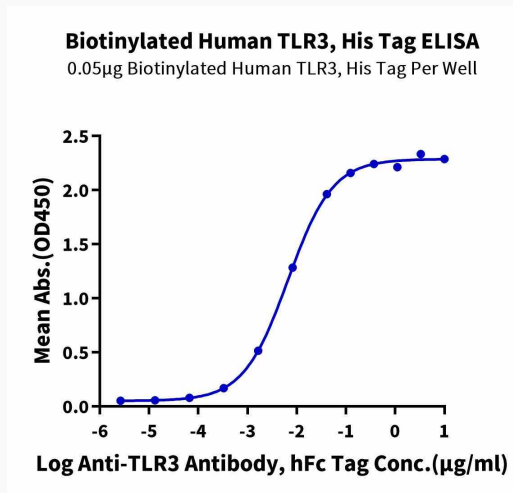
 Email: [info@creative-biomart.com](mailto:info@creative-biomart.com)  Fax: 1-631-938-8127

 45-1 Ramsey Road, Shirley, NY 11967, USA

**Tris-Bis PAGE**



**ELISA**



Tel: 1-631-559-9269 1-516-512-3133

Email: [info@creative-biomart.com](mailto:info@creative-biomart.com) Fax: 1-631-938-8127

45-1 Ramsey Road, Shirley, NY 11967, USA