

# Recombinant Human TLR3 protein, His-Avi-tagged, Biotinylated

**Cat. No.** TLR3-1727H    **Lot. No.** (See product label)

## SPECIFICATION

<b>Product Overview</b>	Biotinylated Recombinant Human TLR3 protein(Q6PCD4)(Ser23-Glu703) is expressed from HEK293 with His tag and Avi tag at the C-terminus.
<b>Species</b>	Human
<b>Source</b>	HEK293
<b>ProteinLength</b>	Ser23-Glu703
<b>Form</b>	Lyophilized from 0.22 µm filtered solution in PBS (pH 7.4).
<b>Storage</b>	-20 to -80°C for 12 months as supplied from date of receipt. -80°C for 3 months after reconstitution. Recommend to aliquot the protein into smaller quantities for optimal storage. Please minimize freeze-thaw cycles.
<b>Bio-activity</b>	Immobilized Biotinylated Human TLR3, His Tag at 0.5µg/ml (100µl/Well) on streptavidin (5µg/ml) precoated plate. Dose response curve for Anti-TLR3 Antibody, hFc Tag with the EC50 of 2.3ng/ml determined by ELISA.
<b>Molecular Mass</b>	It has a predicted MW of 80.25 kDa. Due to glycosylation, the protein migrates to 100-120 kDa based on Bis-Tris PAGE result.
<b>Endotoxin</b>	Less than 1EU per µg by the LAL method.

 Tel: 1-631-559-9269    1-516-512-3133

 Email: [info@creative-biomart.com](mailto:info@creative-biomart.com)     Fax: 1-631-938-8127

 45-1 Ramsey Road, Shirley, NY 11967, USA

<b>Purity</b>	> 95% as determined by Bis-Tris PAGE > 95% as determined by HPLC
---------------	--

<b>Conjugation</b>	Biotin
--------------------	--------

## GENE INFORMATION

<b>Official Symbol</b>	<a href="#">TLR3</a>
------------------------	----------------------

<b>Synonyms</b>	TLR3; toll-like receptor 3; CD283; IIAE2;
-----------------	---

<b>Gene ID</b>	<a href="#">7098</a>
----------------	----------------------

<b>mRNA Refseq</b>	<a href="#">NM_003265</a>
--------------------	---------------------------

<b>Protein Refseq</b>	<a href="#">NP_003256</a>
-----------------------	---------------------------

<b>MIM</b>	<a href="#">603029</a>
------------	------------------------

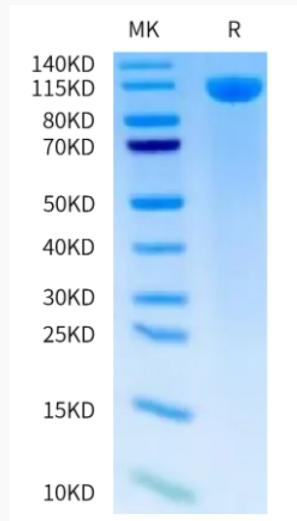
<b>UniProt ID</b>	<a href="#">O15455</a>
-------------------	------------------------

 Tel: 1-631-559-9269 1-516-512-3133

 Email: [info@creative-biomart.com](mailto:info@creative-biomart.com)  Fax: 1-631-938-8127

 45-1 Ramsey Road, Shirley, NY 11967, USA

**Bis-Tris PAGE**



**ELISA**

 Tel: 1-631-559-9269 1-516-512-3133

 Email: [info@creative-biomart.com](mailto:info@creative-biomart.com)  Fax: 1-631-938-8127

 45-1 Ramsey Road, Shirley, NY 11967, USA