

# Recombinant Human TLR4 Protein, Myc/DDK-tagged, C13 and N15-labeled

**Cat. No.** TLR4-2447H    **Lot. No.** (See product label)

## SPECIFICATION

<b>Product Overview</b>	TLR4 MS Standard C13 and N15-labeled recombinant protein (NP_612564) with a C-terminal MYC/DDK tag, was expressed in HEK293 cells.
<b>Species</b>	Human
<b>Source</b>	HEK293
<b>Description</b>	The protein encoded by this gene is a member of the Toll-like receptor (TLR) family which plays a fundamental role in pathogen recognition and activation of innate immunity. TLRs are highly conserved from Drosophila to humans and share structural and functional similarities. They recognize pathogen-associated molecular patterns that are expressed on infectious agents, and mediate the production of cytokines necessary for the development of effective immunity. The various TLRs exhibit different patterns of expression. This receptor has been implicated in signal transduction events induced by lipopolysaccharide (LPS) found in most gram-negative bacteria. Mutations in this gene have been associated with differences in LPS responsiveness. Multiple transcript variants encoding different isoforms have been found for this gene.
<b>Molecular Mass</b>	93.2 kDa
<b>AA Sequence</b>	MSASRLAGTLIPAMAFLSCVRPESWEPCVEVVPNITYQCMELNFYKIPDNLPFSTKN LDLSFNPLRHLGYSYFFSFPELQVLDLSRCEIQTIEDGAYQSLSHLSTLILTGNPIQSL

 Tel: 1-631-559-9269    1-516-512-3133

 Email: [info@creative-biomart.com](mailto:info@creative-biomart.com)     Fax: 1-631-938-8127

 45-1 Ramsey Road, Shirley, NY 11967, USA



ALGAFSGLSSLQKLVAVETNLASLENFPIGHLKTLKELNVAHNLIQSFKLPEYFSNLTN  
 LEHLDLSSNKIQSIYCTDLRVLHQMPLLNLSLDLSLNPMMFIQPGAFKEIRLHKLTLRN  
 NFDSLNVMKTCIQGLAGLEVHRLVLGEFRNEGNLEKFDKSALEGLCNLTIEEFRLAYL  
 DYYLDDIIDLFNCLTNVSSFSLVSVTIERVKDFSYNFGWQHLELVNCKFGQFP TLK LK  
 SLKRLTFTSNKGGNAFSEVDLPSLEFLDLSRNGLSFKGCCSQSDFGTTSLKYLDLSF  
 NGVITMSSNFLGLEQLEHLDFQHSLNKQMSEFSVFLSLRNLIYLDISHTHTRVAFNGIF  
 NGLSSLEVLKMAGNSFQENFLPDIFTELRLNTFLDLSQCQLEQLSPTAFNSLSSLQVL  
 NMSHNNFFSLDTFPYKCLNSLQVLDYSLNHIMTSKKQELQHFPSLAFLNLTQNDF  
 CTCEHQSFLQWIKDQRQLLVEVERMECATPSDKQGMPVLSL NITCQMNKTIIGVSVL  
 SVLVVSVVAVLVYKFYFHLMLLAGCIKYGRGENIYDAFVIYSSQDEDWVRNELVKNLE  
 EGVPPFQLCLHYRDFIPGVAIAANIIHEGFHKS R KVIVVVSQHFIQSRWCIFEYEIAQT  
 WQFLSSRAGIIFIVLQKVEKTLLRQQVELYRLLSRNTYLEWEDSVLGRHIFWRRLRKA  
 LLDGKSWNPEGTVGTGCNWQEATSITRTRPLEQKLISEEDLAANDILDYKDDDDKV

<b>Purity</b>	> 80% as determined by SDS-PAGE and Coomassie blue staining
<b>Stability</b>	Stable for 3 months from receipt of products under proper storage and handling conditions.
<b>Storage</b>	Store at -80 centigrade. Avoid repeated freeze-thaw cycles.
<b>Concentration</b>	50 µg/mL as determined by BCA
<b>Storage Buffer</b>	100 mM glycine, 25 mM Tris-HCl, pH 7.3.

## GENE INFORMATION

<b>Gene Name</b>	TLR4 toll-like receptor 4 [ Homo sapiens (human) ]
<b>Official Symbol</b>	TLR4

**Synonyms** TLR4; toll-like receptor 4; CD284; hToll; TLR 4; homolog of Drosophila toll; TOLL; TLR-4; ARMD10;

**Gene ID** 7099

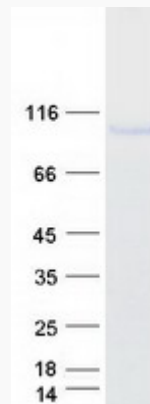
**mRNA Refseq** NM\_138554

**Protein Refseq** NP\_612564

**MIM** 603030

**UniProt ID** O00206

**SDS-PAGE**



 Tel: 1-631-559-9269 1-516-512-3133

 Email: [info@creative-biomart.com](mailto:info@creative-biomart.com)  Fax: 1-631-938-8127

 45-1 Ramsey Road, Shirley, NY 11967, USA