

Recombinant Human TLR4 Protein (Met1-Lys631), C-His tagged

Cat. No. TLR4-5138H **Lot. No.** (See product label)

SPECIFICATION

| | |
|-------------------------|---|
| Product Overview | Recombinant human TLR4 (Met1-Lys631) fused with the C-terminal His tag was expressed in Mammalian cells. |
| Species | Human |
| Source | Mammalian Cells |
| ProteinLength | Met1-Lys631 |
| Form | Lyophilized powder/frozen liquid |
| Molecular Mass | 69.41 kDa |
| Endotoxin | < 1.0 EU/μg of the protein as determined by the LAL method. |
| Purity | >90% as determined by SDS-PAGE. |
| Notes | For research use only. |
| Storage | Use a manual defrost freezer and avoid repeated freeze thaw cycles. Store at 2 to 8 centigrade for one week. Store at -20 to -80 centigrade for twelve months from the date of receipt. |
| Storage Buffer | Supplied as solution form in PBS or lyophilized from PBS. |

 Tel: 1-631-559-9269 1-516-512-3133

 Email: info@creative-biomart.com  Fax: 1-631-938-8127

 45-1 Ramsey Road, Shirley, NY 11967, USA

Reconstitution Reconstitute in sterile water for a stock solution.

Shipping They are shipped out with dry ice/blue ice unless customers require otherwise.

GENE INFORMATION

Gene Name TLR4 toll-like receptor 4 [Homo sapiens (human)]

Official Symbol TLR4

Synonyms TLR4; toll-like receptor 4; CD284; hToll; TLR 4; homolog of Drosophila toll; TOLL; TLR-4; ARMD10;

Gene ID 7099

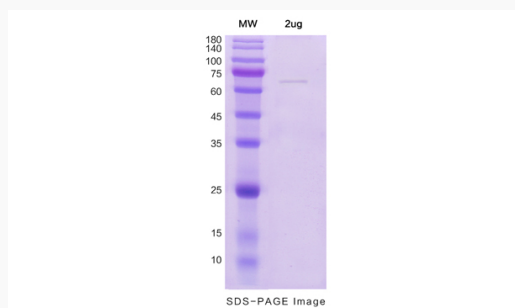
mRNA Refseq NM_003266

Protein Refseq NP_003257

MIM 603030

UniProt ID O00206

SDS-PAGE



Tel: 1-631-559-9269 1-516-512-3133

Email: info@creative-biomart.com Fax: 1-631-938-8127

45-1 Ramsey Road, Shirley, NY 11967, USA