

## Recombinant Rat Tlr4 Protein, 26-635aa, C-8xHis tagged

Cat. No. TLR4-6084R Lot. No. (See product label)

### SPECIFICATION

<b>Product Overview</b>	Recombinant Rat TLR4 Protein (26-635aa) with C-8xHis tag was expressed in HEK293.
<b>Species</b>	Rat
<b>Source</b>	HEK293
<b>ProteinLength</b>	26-635aa
<b>Description</b>	Enables lipopolysaccharide binding activity and phosphatidylinositol 3-kinase binding activity. Involved in several processes, including detection of stimulus involved in sensory perception of pain; immune response-regulating signaling pathway; and response to steroid hormone. Located in cell surface and cytoplasm. Colocalizes with membrane raft. Used to study several diseases, including carotid stenosis; ileitis; neuropathy (multiple); obesity; and renal fibrosis. Biomarker of several diseases, including kidney failure (multiple); pancreatitis (multiple); perinatal necrotizing enterocolitis; pulpitis; and sciatic neuropathy. Human ortholog(s) of this gene implicated in several diseases, including allergic contact dermatitis (multiple); artery disease (multiple); autoimmune disease (multiple); eye disease (multiple); and lung disease (multiple). Orthologous to human TLR4 (toll like receptor 4).
<b>Molecular Mass</b>	The protein has a calculated MW of 71 kDa.
<b>AA Sequence</b>	NPCIEVLPNITYQCMDQNLSKIPHDIPYSTKNLDLSFNPLKILRSYSFTNFSQLQWLDL SRCEIETIEDKAWHGLNQLSTLVLTGNPIKSFSPGFSFGLTNLENLVAVETKMTSLEG

 Tel: 1-631-559-9269 1-516-512-3133

 Email: [info@creative-biomart.com](mailto:info@creative-biomart.com)  Fax: 1-631-938-8127

 45-1 Ramsey Road, Shirley, NY 11967, USA

FHIGQLISLKKLNVAHNLIHSFKLPEYFSNLTNLEHVDLSYNYIQTISVKDLQFLREN PQ  
 VNLSLDLSLNPIDSIQAQAFQGIRLHELTLRSNFSSNVLKMCLQNMTGLHVHRLILG  
 EFKNERNLESFDRSVMEGLCNVSIDEFRLTYINHFSDDIYNLNCLANISAMSFTGVHIK  
 HIADVPRHFQWQSLSIIRCHLKPFPKLSLPLFKSWTLTTNREDISFGQLALPSRLRYLDL  
 SRNAMSFRCSSYDFGTNNLKYLDLSFNGVILMSANFMGLEELEYLDFQHSTLKK  
 VTEFSVFLSLEKLLYLDISYTNNTKIDFDGIFLGLISLNTLKMAGNSFKDNTLSNVFTNTT  
 NLTFDLKSKCQLEQISRGVFDLYRLQLLNMSHNNLLFLDPSHYKQLYSLRTLDCSFN  
 RIETSKGILQHFPKSLAVFNLTNNSVACICEYQNFLQWVKDQKMFLVNVEQMKCASP  
 IDMKASLVLDFTNSTCYIYKTIISVSHHHHHHHH

<b>Endotoxin</b>	<1 EU/μg by LAL
<b>Purity</b>	>80% by SDS-PAGE
<b>Storage</b>	Store it under sterile conditions at -20 to -80 centigrade. It is recommended that the protein be aliquoted for optimal storage. Avoid repeated freeze-thaw cycles.
<b>Concentration</b>	0.034 mg/mL by BCA
<b>Storage Buffer</b>	Sterile PBS, pH 7.4.

## GENE INFORMATION

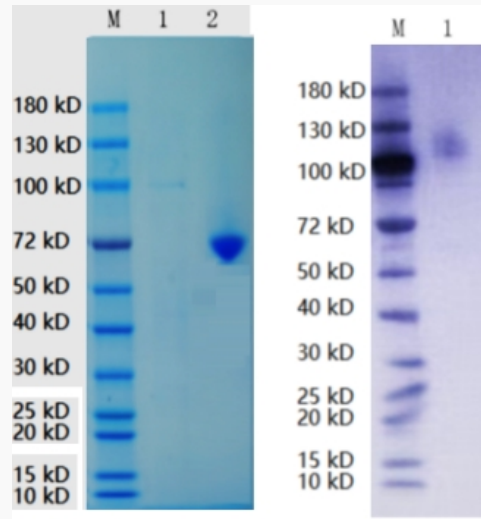
<b>Gene Name</b>	Tlr4 toll-like receptor 4 [ <i>Rattus norvegicus</i> (Norway rat) ]
<b>Official Symbol</b>	Tlr4
<b>Synonyms</b>	Tlr4; toll-like receptor 4; toll-like receptor 4; toll4; EC 3.2.2.6
<b>Gene ID</b>	29260

mRNA Refseq [NM\\_019178](#)

Protein Refseq [NP\\_062051](#)

UniProt ID [G3V7D8](#)

Reducing 4%-20%  
SDS-PAGE (CBB  
stained) and WB  
(Anti-His Mouse  
Monoclonal  
antibody) analysis  
profiles of purified  
TLR4.



1. TLR4
2. BSA

 Tel: 1-631-559-9269 1-516-512-3133

 Email: [info@creative-biomart.com](mailto:info@creative-biomart.com)  Fax: 1-631-938-8127

 45-1 Ramsey Road, Shirley, NY 11967, USA