

# Recombinant Human TLR5 Protein, Myc/DDK-tagged, C13 and N15-labeled

**Cat. No.** TLR5-2954H    **Lot. No.** (See product label)

## SPECIFICATION

<b>Product Overview</b>	TLR5 MS Standard C13 and N15-labeled recombinant protein (NP_003259) with a C-terminal MYC/DDK tag, was expressed in HEK293 cells.
<b>Species</b>	Human
<b>Source</b>	HEK293
<b>Description</b>	<p>This gene encodes a member of the toll-like receptor (TLR) family, which plays a fundamental role in pathogen recognition and activation of innate immune responses. These receptors recognize distinct pathogen-associated molecular patterns that are expressed on infectious agents. The protein encoded by this gene recognizes bacterial flagellin, the principal component of bacterial flagella and a virulence factor. The activation of this receptor mobilizes the nuclear factor NF-kappaB, which in turn activates a host of inflammatory-related target genes. Mutations in this gene have been associated with both resistance and susceptibility to systemic lupus erythematosus, and susceptibility to Legionnaire disease.</p>
<b>Molecular Mass</b>	97.77 kDa
<b>AA Sequence</b>	<p>MGDHLDLLLGVVLMAGPVFGIPSCSFDGRIAFYRFCNLTQVPQVLNTERLLLSFN  RTVTASSFPFLEQLQLLELGSQYTPLTIDKEAFRNLPNLRILDGSSKIYFLHPDAFQ  LFHLFELRLYFCGLSDAVLKDGYFRNLKALTRLDLSKNQIRSLYLHPSFGKLNLSK  SIDFSSNQIFLVCEHELEPLQGKTLFFFSLAANSLYSRVSDWVGKCMNPFRRNMVLEILDV</p>

 Tel: 1-631-559-9269    1-516-512-3133

 Email: [info@creative-biomart.com](mailto:info@creative-biomart.com)     Fax: 1-631-938-8127

 45-1 Ramsey Road, Shirley, NY 11967, USA

SGNGWTVDITGNFSNAISKSQAFSLILAHHIMGAGFGFHNIKDPDQNTFAGLARSSV  
 RHLDSLHGFVFSLSNSRVFETLKDCLKVLNLAYNKINKIADEAFYGLDNLQVLNLSYNLL  
 GELYSSNFYGLPKVAYIDLQKNHIAIQDQTFKFLEKLQTLDLRDNALTTIHFIPIPDIFL  
 SGNKLVTLPKINLTANLIHLSNRLENLDILYFLLRVPHLQILNLQNRFSSCSGDQTPS  
 ENPSLEQLFLGENMLQLAWETELCWDVFEGLSHLQVLYLNHNYLNSLPPGVFVSHLT  
 ALRGLSLNSNRLTVLSHNDLPANLEILDISRNQLLAPNPDVFSVSLVDITHNKFICEC  
 ELSTFINWLNHTNVTIAGPPADIYCVYPDSLSGVSLFSLSTEGCDEEEVLKSLKFSLFI  
 VCTVTLTLFLMTILTVTKFRGFCFICYKTAQRLVFKDHPQGTEPDMYKYDAYLCFSSK  
 DFTWVQNALLKHLDTQYSDQNRFNLCFEERDFVPGENRIANIQDAIWNRSRKIVCLVS  
 RHFLRDGWCLEAFSYAQGRCLSDLSALIMVVVGSLSQYQLMKHQSIIRGFVQKQQ  
 YLRWPEDLQDVGWFLHKLSSQILKKEKEKDDNNIPLQTVATISTRTRPLEQKLISEE  
 DLAANDILDYKDDDDKV

**Purity** > 80% as determined by SDS-PAGE and Coomassie blue staining

**Stability** Stable for 3 months from receipt of products under proper storage and handling conditions.

**Storage** Store at -80 centigrade. Avoid repeated freeze-thaw cycles.

**Concentration** 50 µg/mL as determined by BCA

**Storage Buffer** 100 mM glycine, 25 mM Tris-HCl, pH 7.3.

## GENE INFORMATION

**Gene Name** TLR5 toll-like receptor 5 [ Homo sapiens (human) ]

**Official Symbol** TLR5

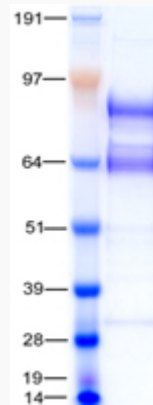
**Synonyms** TLR5; toll-like receptor 5; FLJ10052; MGC126430; MGC126431; SLEB1; TIL3;

 Tel: 1-631-559-9269 1-516-512-3133

 Email: [info@creative-biomart.com](mailto:info@creative-biomart.com)  Fax: 1-631-938-8127

 45-1 Ramsey Road, Shirley, NY 11967, USA

Toll/interleukin 1 receptor like protein 3; toll/interleukin-1 receptor-like protein 3;

**Gene ID** 7100**mRNA Refseq** NM\_003268**Protein Refseq** NP\_003259**MIM** 603031**UniProt ID** O60602**SDS-PAGE** Tel: 1-631-559-9269 1-516-512-3133 Email: [info@creative-biomart.com](mailto:info@creative-biomart.com)  Fax: 1-631-938-8127 45-1 Ramsey Road, Shirley, NY 11967, USA