

Recombinant Human TLR6 Protein (Gly143-Ile383), N-His tagged

Cat. No. TLR6-1488H Lot. No. (See product label)

SPECIFICATION

Product Overview	Recombinant Human CD286/TLR6 (Gly143-Ile383) fused with the N-His tag was expressed in E. coli.
Species	Human
Source	E.coli
ProteinLength	Gly143-Ile383
Form	Lyophilized powder/frozen liquid
Molecular Mass	30.19 kDa
Purity	>90% as determined by SDS-PAGE.
Notes	For research use only.
Storage	Use a manual defrost freezer and avoid repeated freeze thaw cycles. Store at 2 to 8 centigrade for one week. Store at -20 to -80 centigrade for twelve months from the date of receipt.
Storage Buffer	0.01M PBS, pH 7.4, 0.02% NLS
Reconstitution	Reconstitute in sterile water for a stock solution.

 Tel: 1-631-559-9269 1-516-512-3133

 Email: info@creative-biomart.com  Fax: 1-631-938-8127

 45-1 Ramsey Road, Shirley, NY 11967, USA

Shipping

They are shipped out with dry ice/blue ice unless customers require otherwise.

GENE INFORMATION

Gene Name TLR6 toll-like receptor 6 [Homo sapiens (human)]

Official Symbol TLR6

Synonyms TLR6; toll-like receptor 6; CD286;

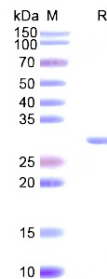
Gene ID 10333

mRNA Refseq NM_006068

Protein Refseq NP_006059

MIM 605403

UniProt ID Q9Y2C9

SDS-PAGE


 Tel: 1-631-559-9269 1-516-512-3133

 Email: info@creative-biomart.com  Fax: 1-631-938-8127

 45-1 Ramsey Road, Shirley, NY 11967, USA