

Recombinant Human TM9SF1 Protein, Myc/DDK-tagged, C13 and N15-labeled

Cat. No. TM9SF1-448H Lot. No. (See product label)

SPECIFICATION

Product Overview	TM9SF1 MS Standard C13 and N15-labeled recombinant protein (NP_006396) with a C-terminal MYC/DDK tag, was expressed in HEK293 cells.
Species	Human
Source	HEK293
Description	Plays an essential role in autophagy.
Molecular Mass	68.9 kDa
AA Sequence	<p>MTVVG NPRSWSCQWLPILILLGTGHGPGVEGVTHYKAGDPVILYVNKVGPHYHNPQ ETYHYYQLPVCCPEKIRHKSLSLGEVLDGDRMAESLYEIRFRENVEKRILCHMQLSS AQVEQLRQAIEELYFEFVDDLPIRGFVGYMEESGFLPHSHKIGLWTHLDFHLEFH GDRIIFANVSVRDVKPHSLDGLRPDEFGLTHTYSVRWSETSVERRSDRRRGDDGG FFPRTLEIHWLSIINSMVLVFLLVGFVAVILMRVLRNDLARYNLDEETTSAGSGDDFD QGDNGWKIIHTDVFRFPYRGLLCAVLGVGAQFLALGTGIIVMALLGMFNVHRHGAI NSAAILLYALTCCISGYVSSHFYRQIGGERWVWNIILTTSLSVPFFLTWSVNSVHW ANGSTQALPATTILLLLTVWLLVGFPLTVIGGIFGKNNASPFDA PCRTKNIAREIPPQP WYKSTVIHMTVGGFLPFS AISVELYYIFATVWGREQYTYLILFFVFAILLSVGACISIA LTYFQLSGEDYRWWWRSVLSVGSTGLFIFLYSVFYARRSNMSGAVQTVEFFGYSL LTGYVFFLMLGTISFFSSLKFI RYIYVNLKMDTRTRPLEQKLISEEDLAANDILDYKDDD DKV</p>

 Tel: 1-631-559-9269 1-516-512-3133

 Email: info@creative-biomart.com  Fax: 1-631-938-8127

 45-1 Ramsey Road, Shirley, NY 11967, USA

Purity	> 80% as determined by SDS-PAGE and Coomassie blue staining
Stability	Stable for 3 months from receipt of products under proper storage and handling conditions.
Storage	Store at -80 centigrade. Avoid repeated freeze-thaw cycles.
Concentration	50 µg/mL as determined by BCA
Storage Buffer	100 mM glycine, 25 mM Tris-HCl, pH 7.3.

GENE INFORMATION

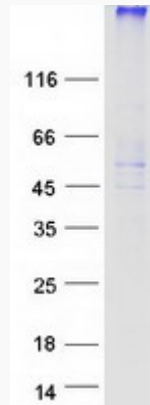
Gene Name	TM9SF1 transmembrane 9 superfamily member 1 [Homo sapiens (human)]
Official Symbol	TM9SF1
Synonyms	TM9SF1; transmembrane 9 superfamily member 1; HMP70; MP70; MP70 protein family member; multispinning membrane protein (70kD); transmembrane protein 9 superfamily member 1
Gene ID	10548
mRNA Refseq	NM_006405
Protein Refseq	NP_006396
MIM	618965
UniProt ID	O15321

 Tel: 1-631-559-9269 1-516-512-3133

 Email: info@creative-biomart.com  Fax: 1-631-938-8127

 45-1 Ramsey Road, Shirley, NY 11967, USA

SDS-PAGE



 Tel: 1-631-559-9269 1-516-512-3133

 Email: info@creative-biomart.com  Fax: 1-631-938-8127

 45-1 Ramsey Road, Shirley, NY 11967, USA