

## Recombinant Human TMED9 Protein (40-197 aa), GST-tagged

Cat. No. TMED9-1208H Lot. No. (See product label)

### SPECIFICATION

<b>Product Overview</b>	Recombinant Human TMED9 Protein (40-197 aa) is produced by E. coli expression system. This protein is fused with a GST tag at the N-terminal. Research Area: Signal Transduction. Protein Description: Partial.
<b>Species</b>	Human
<b>Source</b>	E.coli
<b>ProteinLength</b>	40-197 aa
<b>Description</b>	Appears to be involved in vesicular protein trafficking, mainly in the early secretory pathway. In COPI vesicle-mediated retrograde transport involved in the coatomer recruitment to mbranes of the early secretory pathway. Increases coatomer-dependent activity of ARFGAP2. Thought to play a crucial role in the specific retention of p24 complexes in cis-Golgi mbranes; specifically contributes to the coupled localization of TMED2 and TMED10 in the cis-Golgi network. May be involved in organization of intracellular mbranes, such as of the ER-Golgi intermediate compartment and the Golgi apparatus. Involved in ER localization of PTPN2 isoform PTPB.
<b>Form</b>	Tris-based buffer,50% glycerol
<b>Molecular Mass</b>	45.5 kDa
<b>AA Sequence</b>	FHIGETEKKCFIEEIPDETMVIGNYRTQLYDKQREEYQPATPGLGMFVEVKDPEDKVI

 Tel: 1-631-559-9269 1-516-512-3133

 Email: [info@creative-biomart.com](mailto:info@creative-biomart.com)  Fax: 1-631-938-8127

 45-1 Ramsey Road, Shirley, NY 11967, USA

LARQYGSEGRFTFTSHTPGEHQICLHSNSTKFSLFAGGMLRVHLDIQVGEHANDYA  
EIAAKDKLSELQLRVRQLVEQVEQIQKEQNYQRWREERFRQTSE

**Purity** > 90% as determined by SDS-PAGE.

**Notes** Repeated freezing and thawing is not recommended. Store working aliquots at 4 centigrade for up to one week.

**Storage** The shelf life is related to many factors, storage state, buffer ingredients, storage temperature and the stability of the protein itself. Generally, the shelf life of liquid form is 6 months at -20 centigrade/-80 centigrade. The shelf life of lyophilized form is 12 months at -20 centigrade/-80 centigrade.

**Concentration** A hardcopy of COA with reconstitution instruction is sent along with the products. Please refer to it for detailed information.

## GENE INFORMATION

**Gene Name** [TMED9 transmembrane p24 trafficking protein 9 \[ Homo sapiens \(human\) \]](#)

**Official Symbol** [TMED9](#)

**Synonyms** p25; GMP25; p24a2; HSGP25L2G; p24alpha2;

**Gene ID** [54732](#)

**mRNA Refseq** [NM\\_017510](#)

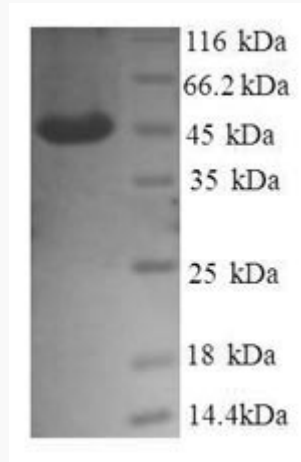
**Protein Refseq** [NP\\_059980](#)

**UniProt ID** [Q9BVK6](#)

 Tel: 1-631-559-9269 1-516-512-3133

 Email: [info@creative-biomart.com](mailto:info@creative-biomart.com)  Fax: 1-631-938-8127

 45-1 Ramsey Road, Shirley, NY 11967, USA



(Tris-Glycine gel) Discontinuous SDS-PAGE (reduced) with 5% enrichment gel and 15% separation gel.

 Tel: 1-631-559-9269 1-516-512-3133

 Email: [info@creative-biomart.com](mailto:info@creative-biomart.com)  Fax: 1-631-938-8127

 45-1 Ramsey Road, Shirley, NY 11967, USA