

Recombinant Human TMED9 Protein, Myc/DDK-tagged, C13 and N15-labeled

Cat. No. TMED9-604H **Lot. No.** (See product label)

SPECIFICATION

Product Overview	TMED9 MS Standard C13 and N15-labeled recombinant protein (NP_059980) with a C-terminal MYC/DDK tag, was expressed in HEK293 cells.
Species	Human
Source	HEK293
Description	This gene is a member of a family of genes encoding transport proteins located in the endoplasmic reticulum and the Golgi. A similar gene in mouse is the target of microRNA miR-296, which is part of an imprinted cluster.
Molecular Mass	27.3 kDa
AA Sequence	MAVELGVLLVRPRPGTGLGRVMRTLLLVLWLATRGSALYFHIGETEKKCFIEEIPDET MVIGNYRTQLYDKQREEYQPATPGLGMFVEVKDPEDKVILARQYGSEGRFTFTSHT PGEHQICLHSNSTKFSLFAGGMLRVHLDIQVGEHANDYAEIAAKDKLSELQLRVRQL VEQVEIQKEQNYQRWREERFRQTSESTNQRVLWWSILQTLILVAIGVWQMRHLKS FFEAKKLVTTRTRPLEQKLISEEDLAANDILDYKDDDDKV
Purity	> 80% as determined by SDS-PAGE and Coomassie blue staining
Stability	Stable for 3 months from receipt of products under proper storage and handling conditions.

 Tel: 1-631-559-9269 1-516-512-3133

 Email: info@creative-biomart.com  Fax: 1-631-938-8127

 45-1 Ramsey Road, Shirley, NY 11967, USA

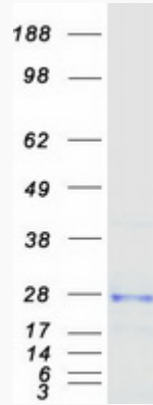
Storage	Store at -80 centigrade. Avoid repeated freeze-thaw cycles.
Concentration	50 µg/mL as determined by BCA
Storage Buffer	100 mM glycine, 25 mM Tris-HCl, pH 7.3.
GENE INFORMATION	
Gene Name	TMED9 transmembrane emp24 protein transport domain containing 9 [Homo sapiens (human)]
Official Symbol	TMED9
Synonyms	TMED9; transmembrane p24 trafficking protein 9; p25; GMP25; p24a2; HSGP25L2G; p24alpha2; transmembrane emp24 domain-containing protein 9; glycoprotein 25L2; p24 family protein alpha-2; transmembrane emp24 protein transport domain containing 9
Gene ID	54732
mRNA Refseq	NM_017510
Protein Refseq	NP_059980
UniProt ID	Q9BVK6

 Tel: 1-631-559-9269 1-516-512-3133

 Email: info@creative-biomart.com  Fax: 1-631-938-8127

 45-1 Ramsey Road, Shirley, NY 11967, USA

SDS-PAGE



 Tel: 1-631-559-9269 1-516-512-3133

 Email: info@creative-biomart.com  Fax: 1-631-938-8127

 45-1 Ramsey Road, Shirley, NY 11967, USA