

Recombinant Human TMEFF1 Protein, Myc/DDK-tagged, C13 and N15-labeled

Cat. No. TMEFF1-3935H **Lot. No.** (See product label)

SPECIFICATION

Product Overview	TMEFF1 MS Standard C13 and N15-labeled recombinant protein (NP_003683) with a C-terminal MYC/DDK tag, was expressed in HEK293 cells.
Species	Human
Source	HEK293
Description	TMEFF1 (Transmembrane Protein With EGF Like And Two Follistatin Like Domains 1) is a Protein Coding gene. Diseases associated with TMEFF1 include Hyaline Fibromatosis Syndrome. An important paralog of this gene is MSANTD3-TMEFF1.
Molecular Mass	40.9 kDa
AA Sequence	<p>MGAAAAEAPLRLPAAPPLAFCCYTSVLLLFASFSLPGSRASNQPPGGGGGSGGDCP GGKGKSINCSELVRESVRCDESSCKYGGVCKEDGDGLKACQFQCHTNYIPV CGSNGDITYQNECFLRRAACKHQKEITVIARGPCYSDNGSGSGEGEEEGSGAEVHR KHSKCGPCKYKAECDEDAENVGVCNIDCSGYSFNPVCASDGSSYNNPCFVREAS CIKQEQIDIRHLGHCTD TDDTSLLGKKDDGLQYRPDVKDASDQREDVYIGNHMPCE NLNGYCIHGKCEFIYSTQKASCRCESGYTQGHCEKTD FSILYV VPSRQKLTHVLIAAII GAVQIAIIVAIMCITRKCPKNNRGRRQKQNLGHFTSDTSSRMVTRTRPLEQKLISEE DLAANDILDYKDDDDKV</p>
Purity	> 80% as determined by SDS-PAGE and Coomassie blue staining

 Tel: 1-631-559-9269 1-516-512-3133

 Email: info@creative-biomart.com  Fax: 1-631-938-8127

 45-1 Ramsey Road, Shirley, NY 11967, USA

Stability	Stable for 3 months from receipt of products under proper storage and handling conditions.
Storage	Store at -80 centigrade. Avoid repeated freeze-thaw cycles.
Concentration	50 µg/mL as determined by BCA
Storage Buffer	100 mM glycine, 25 mM Tris-HCl, pH 7.3.

GENE INFORMATION

Gene Name	TMEFF1 transmembrane protein with EGF-like and two follistatin-like domains 1 [Homo sapiens (human)]
Official Symbol	TMEFF1
Synonyms	TMEFF1; transmembrane protein with EGF-like and two follistatin-like domains 1; C9orf2; tomoregulin-1; cancer/testis antigen family 120; member 1; CT120.1; H7365; tomoregulin 1; cancer/testis antigen family 120, member 1; transmembrane protein with EGF-like and one follistatin-like domain; TR-1;
Gene ID	8577
mRNA Refseq	NM_003692
Protein Refseq	NP_003683
MIM	603421
UniProt ID	Q8IYR6

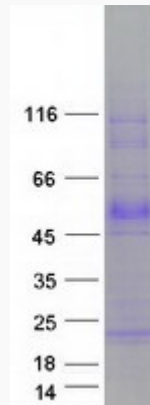
 Tel: 1-631-559-9269 1-516-512-3133

 Email: info@creative-biomart.com  Fax: 1-631-938-8127

 45-1 Ramsey Road, Shirley, NY 11967, USA



SDS-PAGE



Tel: 1-631-559-9269 1-516-512-3133

Email: info@creative-biomart.com Fax: 1-631-938-8127

45-1 Ramsey Road, Shirley, NY 11967, USA