

Recombinant Human TMEFF2 protein, His & T7-tagged

Cat. No. TMEFF2-1413H Lot. No. (See product label)

SPECIFICATION

Product Overview	Recombinant Human TMEFF2 aa. (Thr52~Arg290 (Accession # Q9UIK5)) fused with N-terminal His & T7 tag was produced in E. coli cells.
Species	Human
Source	E.coli
ProteinLength	Thr52~Arg290
Description	This gene encodes a member of the tomoregulin family of transmembrane proteins. This protein has been shown to function as both an oncogene and a tumor suppressor depending on the cellular context and may regulate prostate cancer cell invasion. Multiple soluble forms of this protein have been identified that arise from both an alternative splice variant and ectodomain shedding. Additionally, this gene has been found to be hypermethylated in multiple cancer types. Alternative splicing results in multiple transcript variants.
Form	Freeze-dried powder
Molecular Mass	Predicted Molecular Mass: 30.1kDa
Endotoxin	<1.0EU per 1ug (determined by the LAL method)
Purity	>95%

 Tel: 1-631-559-9269 1-516-512-3133

 Email: info@creative-biomart.com  Fax: 1-631-938-8127

 45-1 Ramsey Road, Shirley, NY 11967, USA

Applications	SDS-PAGE; WB; ELISA; IP.
Stability	The thermal stability is described by the loss rate. The loss rate was determined by accelerated thermal degradation test, that is, incubate the protein at 37°C for 48h, and no obvious degradation and precipitation were observed. The loss rate is less than 5% within the expiration date under appropriate storage condition.
Storage	Avoid repeated freeze/thaw cycles. Store at 2-8°C for one month. Aliquot and store at -80°C for 12 months.
Storage buffer	Supplied as lyophilized form in PBS, pH7.4, containing 5% trehalose, 0.01% sarcosyl.
Reconstitution	Reconstitute in sterile PBS, pH7.2-pH7.4.
Isoelectric Point	4.8

GENE INFORMATION

Gene Name	TMEFF2 transmembrane protein with EGF like and two follistatin like domains 2 [Homo sapiens (human)]
Official Symbol	TMEFF2
Synonyms	TMEFF2; transmembrane protein with EGF like and two follistatin like domains 2; TR; HPP1; TPEF; TR-2; TENB2; CT120.2; tomoregulin-2; cancer/testis antigen family 120, member 2; hyperplastic polyposis protein 1; transmembrane protein TENB2; transmembrane protein with EGF-like and two follistatin-like domains
Gene ID	23671
mRNA Refseq	NM_001305134.1

 Tel: 1-631-559-9269 1-516-512-3133

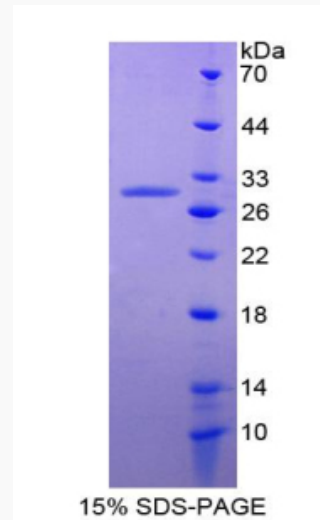
 Email: info@creative-biomart.com  Fax: 1-631-938-8127

 45-1 Ramsey Road, Shirley, NY 11967, USA

Protein Refseq NP_001292063.1

UniProt ID Q9UIK5

SDS-PAGE



 Tel: 1-631-559-9269 1-516-512-3133

 Email: info@creative-biomart.com  Fax: 1-631-938-8127

 45-1 Ramsey Road, Shirley, NY 11967, USA