

Active Recombinant Human TMEFF2 protein, His-tagged

Cat. No. TMEFF2-274H Lot. No. (See product label)

SPECIFICATION

Product Overview	Recombinant Human TMEFF2 protein(Q9UIK5)(Met1-Val320), fused with His tag, was expressed in HEK293.
Species	Human
Source	HEK293
ProteinLength	Met1-Val320
Form	Lyophilized from 0.22 µm filtered solution in PBS, pH7.4.
Bio-activity	When Recombinant Human TMEFF2 / His Protein is immobilized at 5g/mL (100 µ/well), the concentration of Anti Human TMEFF2 antibody that produces 50% of the optimal binding response is approximately 70 ng/ml.
Molecular Mass	The protein has a calculated MW of 32kDa. The reducing (R) heterodimer protein migrates as 35-50 kDa due to glycosylation
Endotoxin	<1EU/mg
Purity	SDS-PAGE>90%
Storage	Store at -20°C.
Reconstitution	sterile H51O

 Tel: 1-631-559-9269 1-516-512-3133

 Email: info@creative-biomart.com  Fax: 1-631-938-8127

 45-1 Ramsey Road, Shirley, NY 11967, USA

GENE INFORMATION

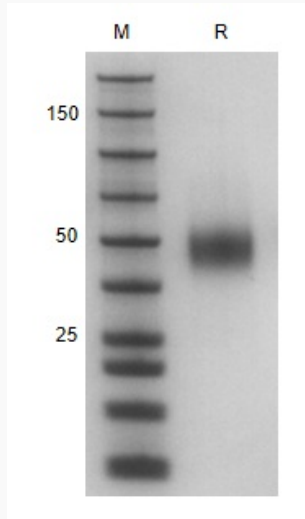
Gene Name	TMEFF2 transmembrane protein with EGF-like and two follistatin-like domains 2 [Homo sapiens]
Official Symbol	TMEFF2
Synonyms	TMEFF2; transmembrane protein with EGF-like and two follistatin-like domains 2; tomoregulin-2; cancer/testis antigen family 120; member 2; CT120.2; HPP1; TENB2; tomoregulin; TPEF; TR; transmembrane protein TENB2; TR-2; hyperplastic polyposis protein 1; cancer/testis antigen family 120, member 2;
Gene ID	23671
mRNA Refseq	NM_016192
Protein Refseq	NP_057276
MIM	605734
UniProt ID	Q9UIK5

 Tel: 1-631-559-9269 1-516-512-3133

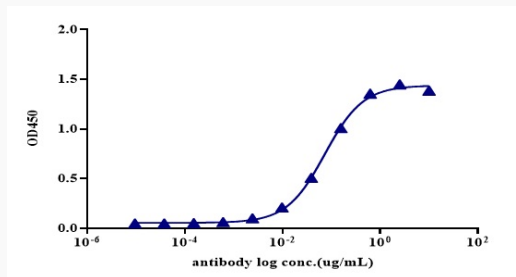
 Email: info@creative-biomart.com  Fax: 1-631-938-8127

 45-1 Ramsey Road, Shirley, NY 11967, USA

SDS-PAGE



ELISA



 Tel: 1-631-559-9269 1-516-512-3133

 Email: info@creative-biomart.com  Fax: 1-631-938-8127

 45-1 Ramsey Road, Shirley, NY 11967, USA