

Active Recombinant Human TMEFF2 protein, hFc-tagged

Cat. No. TMEFF2-475H Lot. No. (See product label)

SPECIFICATION

Product Overview	Recombinant Human TMEFF2 protein(Q9UIK5)(Phe41-Val320), fused with hFc tag, was expressed in HEK293.
Species	Human
Source	HEK293
ProteinLength	Phe41-Val320
Form	Lyophilized from 0.22 µm filtered solution in PBS, pH7.4.
Bio-activity	When Recombinant Human TMEFF2 / hFC Protein is immobilized at 5g/mL (100 µ/well), the concentration of Anti Human TMEFF2 antibody that produces 50% of the optimal binding response is approximately 80 ng/ml.
Molecular Mass	The protein has a calculated MW of 56kDa. The reducing (R) heterodimer protein migrates as 60-80 kDa due to glycosylation
Endotoxin	<1EU/mg
Purity	SDS-PAGE>95%SEC>95%
Storage	Store at -20°C.
Reconstitution	sterile H370

 Tel: 1-631-559-9269 1-516-512-3133

 Email: info@creative-biomart.com  Fax: 1-631-938-8127

 45-1 Ramsey Road, Shirley, NY 11967, USA

GENE INFORMATION

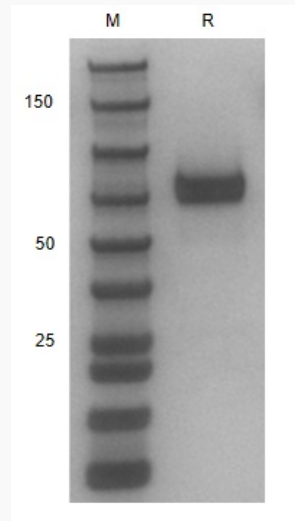
Gene Name	TMEFF2 transmembrane protein with EGF-like and two follistatin-like domains 2 [Homo sapiens]
Official Symbol	TMEFF2
Synonyms	TMEFF2; transmembrane protein with EGF-like and two follistatin-like domains 2; tomoregulin-2; cancer/testis antigen family 120; member 2; CT120.2; HPP1; TENB2; tomoregulin; TPEF; TR; transmembrane protein TENB2; TR-2; hyperplastic polyposis protein 1; cancer/testis antigen family 120, member 2;
Gene ID	23671
mRNA Refseq	NM_016192
Protein Refseq	NP_057276
MIM	605734
UniProt ID	Q9UIK5

 Tel: 1-631-559-9269 1-516-512-3133

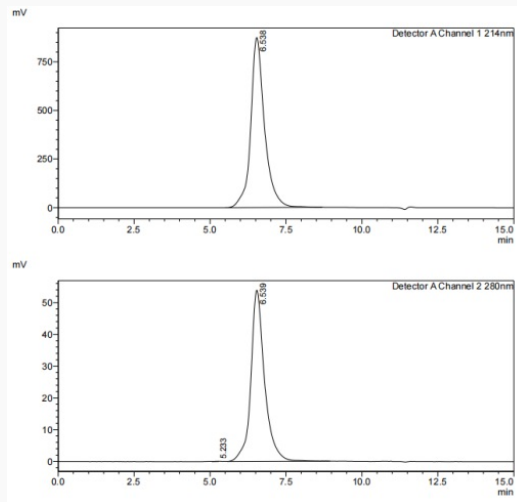
 Email: info@creative-biomart.com  Fax: 1-631-938-8127

 45-1 Ramsey Road, Shirley, NY 11967, USA

SDS-PAGE



SDS-HPLC



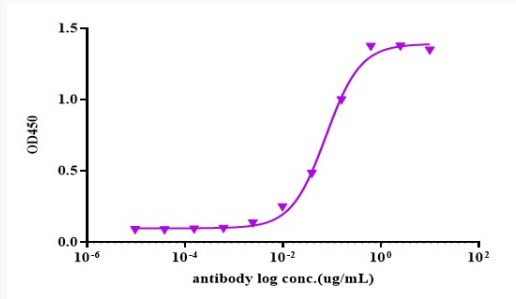
 Tel: 1-631-559-9269 1-516-512-3133

 Email: info@creative-biomart.com  Fax: 1-631-938-8127

 45-1 Ramsey Road, Shirley, NY 11967, USA



ELISA



Tel: 1-631-559-9269 1-516-512-3133

Email: info@creative-biomart.com Fax: 1-631-938-8127

45-1 Ramsey Road, Shirley, NY 11967, USA