

Recombinant Human TMEFF2 Protein (Thr52-Arg290), N-His tagged

Cat. No. TMEFF2-5780H **Lot. No.** (See product label)

SPECIFICATION

Product Overview	Recombinant human TMEFF2 (Thr52-Arg290) fused with the N-His tag was expressed in E. coli.
Species	Human
Source	E.coli
ProteinLength	Thr52-Arg290
Form	Lyophilized powder/frozen liquid
Molecular Mass	28.63 kDa
Purity	> 90 % as determined by SDS-PAGE
Notes	For research use only.
Storage	Use a manual defrost freezer and avoid repeated freeze thaw cycles. Store at 2 to 8 centigrade for one week. Store at -20 to -80 centigrade for twelve months from the date of receipt.
Storage Buffer	0.01M PBS, pH 7.4, 0.02 % NLS
Reconstitution	Reconstitute in sterile water for a stock solution.

 Tel: 1-631-559-9269 1-516-512-3133

 Email: info@creative-biomart.com  Fax: 1-631-938-8127

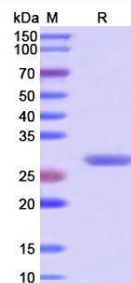
 45-1 Ramsey Road, Shirley, NY 11967, USA

Shipping They are shipped out with dry ice/blue ice unless customers require otherwise.

GENE INFORMATION

Gene Name	TMEFF2 transmembrane protein with EGF-like and two follistatin-like domains 2 [Homo sapiens (human)]
Official Symbol	TMEFF2
Synonyms	TMEFF2; transmembrane protein with EGF-like and two follistatin-like domains 2; tomoregulin-2; cancer/testis antigen family 120; member 2; CT120.2; HPP1; TENB2; tomoregulin; TPEF; TR; transmembrane protein TENB2; TR-2; hyperplastic polyposis protein 1; cancer/testis antigen family 120, member 2;
Gene ID	23671
mRNA Refseq	NM_016192
Protein Refseq	NP_057276
MIM	605734
UniProt ID	Q9UIK5

SDS-PAGE



Tel: 1-631-559-9269 1-516-512-3133

Email: info@creative-biomart.com Fax: 1-631-938-8127

45-1 Ramsey Road, Shirley, NY 11967, USA