

Recombinant Human TMEM106B, GST-tagged

Cat. No. TMEM106B-3274H **Lot. No.** (See product label)

SPECIFICATION

Product Overview	Recombinant Human TMEM106B(150-274 aa), fused with a GST tag at the N-terminus, was expressed in E. coli.
Species	Human
Source	E.coli
ProteinLength	150-274 aa
Form	Lyophilized from sterile PBS, pH7.4, 0.3% SKL, 5% Trehalose, 5% Mannitol.
Molecular Mass	The protein has a calculated MW of 40.72 kDa.
Endotoxin	<1.0EU per 1µg (determined by the LAL method).
Purity	> 90 % as determined by SDS-PAGE.
Storage	Store it under sterile conditions at -80°C. It is recommended that the protein be aliquoted for optimal storage. Avoid repeated freeze-thaw cycles.
Reconstitution	It is recommended that sterile water be added to the vial to prepare a stock solution of 0.86mg/ml. Centrifuge the vial at 4°C before opening to recover the entire contents.
AA Sequence	MSPILGYWKIKGLVQPTRLLEYLEEKYEEHLYERDEGDKWRNKKFELGLEFPNLPY YIDGDVKLTQSMAIIRYIADKHNMLGGCPKERAEISMLEGAVLDIRYGVSRIAYSKDFE

 Tel: 1-631-559-9269 1-516-512-3133

 Email: info@creative-biomart.com  Fax: 1-631-938-8127

 45-1 Ramsey Road, Shirley, NY 11967, USA

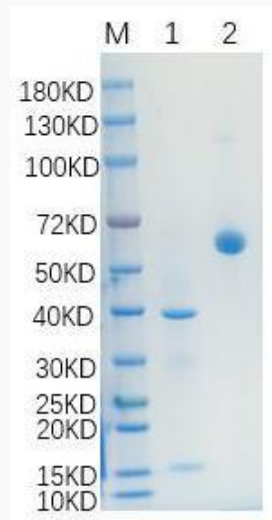


TLKVDFLSKLPEMLKMFEDRLCHKTYLNGDHVTHPDFMLYDALDVVLYMDPMCLDA
FPKLVCFKKRIEAIPQIDKYLKSSKYIAWPLQGQWQATFGGGDHPPKSDLVPRGSLNIT
NNNYYSVEVENITAQVQFSKTVIGKARLNNITIIGPLDMKQIDYTVPTVIAEEMSYMYD
FCTLISIKVHNIVLMMQVTVTTTYFGHSEQISQERYQYVDCGRNTTYQLGQSEYLNVL
QPQQ

GENE INFORMATION

Official Symbol TMEM106B

SDS-PAGE

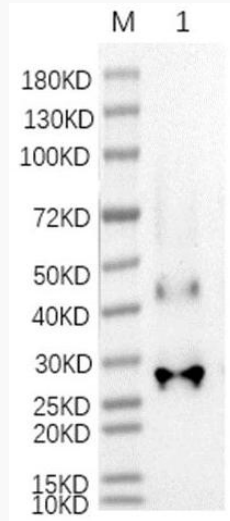


Tel: 1-631-559-9269 1-516-512-3133

Email: info@creative-biomart.com Fax: 1-631-938-8127

45-1 Ramsey Road, Shirley, NY 11967, USA

WB



 Tel: 1-631-559-9269 1-516-512-3133

 Email: info@creative-biomart.com  Fax: 1-631-938-8127

 45-1 Ramsey Road, Shirley, NY 11967, USA