

Recombinant Human TMEM138 Protein, GST-tagged

Cat. No. TMEM138-5265H **Lot. No.** (See product label)

SPECIFICATION

Product Overview	Human HSPC196 full-length ORF (AAH05201, 1 a.a. - 162 a.a.) recombinant protein with GST-tag at N-terminal.
Species	Human
Source	Wheat Germ
Description	This gene encodes a multi-pass transmembrane protein. Reduced expression of this gene in mouse fibroblasts causes short cilia and failure of ciliogenesis. Expression of this gene is tightly coordinated with expression of the neighboring gene TMEM216. Mutations in this gene are associated with the autosomal recessive neurodevelopmental disorder Joubert Syndrome. Alternative splicing results in multiple transcript variants. [provided by RefSeq, Mar 2012]
Molecular Mass	43.56 kDa
AA Sequence	MLQTSNYSLVLSLQFLLLSYDLFVNSFSELLQKTPVIQLVLFIIQDIAVLFNIIIFLMFFNT FVFQAGLVNLLFHKFKGTIILTAVYFALSISLHVWVMNLRWKNNSNSFIWTDGLQMLFV FQRLAAVLYCYFYKRTAVRLGDPHFYQDSLWLRKEFMQVRR
Applications	Enzyme-linked Immunoabsorbent Assay Western Blot (Recombinant protein) Antibody Production Protein Array

 Tel: 1-631-559-9269 1-516-512-3133

 Email: info@creative-biomart.com  Fax: 1-631-938-8127

 45-1 Ramsey Road, Shirley, NY 11967, USA

Notes	Best use within three months from the date of receipt of this protein.
Storage	Store at -80 centigrade. Aliquot to avoid repeated freezing and thawing.
Storage Buffer	50 mM Tris-HCl, 10 mM reduced Glutathione, pH=8.0 in the elution buffer.

GENE INFORMATION

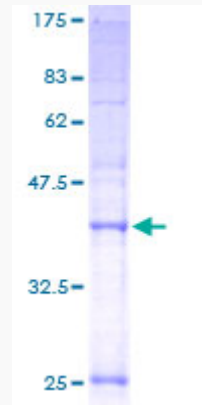
Gene Name	TMEM138 transmembrane protein 138 [Homo sapiens]
Official Symbol	TMEM138
Synonyms	TMEM138; transmembrane protein 138; HSPC196;
Gene ID	51524
mRNA Refseq	NM_016464
Protein Refseq	NP_057548
MIM	614459
UniProt ID	Q9NPI0

 Tel: 1-631-559-9269 1-516-512-3133

 Email: info@creative-biomart.com  Fax: 1-631-938-8127

 45-1 Ramsey Road, Shirley, NY 11967, USA

**Quality Control
Testing**



12.5% SDS-PAGE Stained with Coomassie Blue

 Tel: 1-631-559-9269 1-516-512-3133

 Email: info@creative-biomart.com  Fax: 1-631-938-8127

 45-1 Ramsey Road, Shirley, NY 11967, USA