

Recombinant Human TMEM141 Protein (1-108 aa), GST-tagged

Cat. No. TMEM141-835H **Lot. No.** (See product label)

SPECIFICATION

Product Overview	Recombinant Human TMEM141 Protein (1-108 aa) is produced by E. coli expression system. This protein is fused with a GST tag at the N-terminal. Research Area: Cell Biology. Protein Description: Full Length.
Species	Human
Source	E.coli
ProteinLength	1-108 aa
Form	Tris-based buffer, 50% glycerol
Molecular Mass	38.9 kDa
AA Sequence	MVNLGLSRVDDAVAAKHPGLGEYAAACQSHAFMKGVFTFVTGTGMAFGLQMFIQRK FPYPLQWSLLVAVVAGSVVSYGVTRVESEKCNLWLFLETGQLPKDRSTDQRS
Purity	> 90% as determined by SDS-PAGE.
Notes	Repeated freezing and thawing is not recommended. Store working aliquots at 4 centigrade for up to one week.
Storage	The shelf life is related to many factors, storage state, buffer ingredients, storage temperature and the stability of the protein itself. Generally, the shelf life of liquid form is 6 months at -20 centigrade/-80 centigrade. The shelf life of lyophilized form is 12

 Tel: 1-631-559-9269 1-516-512-3133

 Email: info@creative-biomart.com  Fax: 1-631-938-8127

 45-1 Ramsey Road, Shirley, NY 11967, USA

months at -20 centigrade/-80 centigrade.

Concentration A hardcopy of COA with concentration instruction is sent along with the products.

GENE INFORMATION

Gene Name TMEM141 transmembrane protein 141 [Homo sapiens]

Official Symbol TMEM141

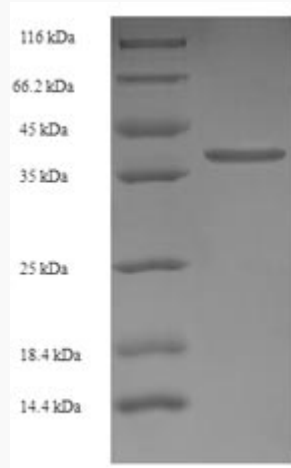
Synonyms TMEM141; transmembrane protein 141; MGC14141; RP11-216L13.7;

Gene ID 85014

mRNA Refseq NM_032928

Protein Refseq NP_116317

UniProt ID Q96I45



 Tel: 1-631-559-9269 1-516-512-3133

 Email: info@creative-biomart.com  Fax: 1-631-938-8127

 45-1 Ramsey Road, Shirley, NY 11967, USA



(Tris-Glycine gel) Discontinuous SDS-PAGE (reduced) with 5% enrichment gel and 15% separation gel.

 Tel: 1-631-559-9269 1-516-512-3133

 Email: info@creative-biomart.com  Fax: 1-631-938-8127

 45-1 Ramsey Road, Shirley, NY 11967, USA