

Recombinant Pongo Abelii TMEM168 Protein (527-637 aa), His-Myc-tagged

Cat. No. TMEM168-2776P **Lot. No.** (See product label)

SPECIFICATION

Product Overview	Recombinant Pongo Abelii (Sumatran orangutan) (<i>Pongo pygmaeus abelii</i>) TMEM168 Protein (527-637 aa) is produced by Baculovirus expression system. This protein is fused with a 10xHis tag at the N-terminal and a Myc tag at the C-terminal. Protein Description: Partial.
Species	Pongo Abelii
Source	Insect Cells
ProteinLength	527-637 aa
Form	Tris-based buffer,50% glycerol
Molecular Mass	16.8 kDa
AA Sequence	EWWRKNGSFCSRLIIVLDSENSTPWVKEVRKINDQYIAVQGAELIKTVDIEEADPPQ LGDFTKDWVEYNCSSNNICWTEKGRTVKAVYGVSKRWSDYTLHLPTGSDVAK
Purity	> 85% as determined by SDS-PAGE.
Notes	Repeated freezing and thawing is not recommended. Store working aliquots at 4 centigrade for up to one week.
Storage	The shelf life is related to many factors, storage state, buffer ingredients, storage

 Tel: 1-631-559-9269 1-516-512-3133

 Email: info@creative-biomart.com  Fax: 1-631-938-8127

 45-1 Ramsey Road, Shirley, NY 11967, USA

temperature and the stability of the protein itself. Generally, the shelf life of liquid form is 6 months at -20 centigrade/-80 centigrade. The shelf life of lyophilized form is 12 months at -20 centigrade/-80 centigrade.

Concentration

A hardcopy of COA will be sent along with the products. Please refer to it for detailed information.

GENE INFORMATION

Gene Name TMEM168 transmembrane protein 168 [Pongo abelii (Sumatran orangutan)]

Official Symbol TMEM168

Synonyms TMEM168;

Gene ID 100172041

mRNA Refseq NM_001131682

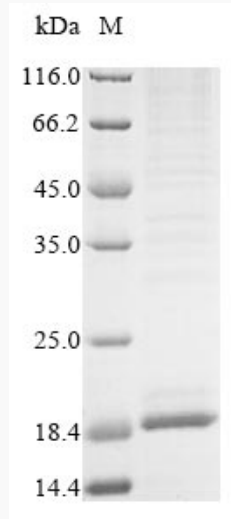
Protein Refseq NP_001125154

UniProt ID Q5RD28

 Tel: 1-631-559-9269 1-516-512-3133

 Email: info@creative-biomart.com  Fax: 1-631-938-8127

 45-1 Ramsey Road, Shirley, NY 11967, USA



(Tris-Glycine gel) Discontinuous SDS-PAGE (reduced) with 5% enrichment gel and 15% separation gel.

 Tel: 1-631-559-9269 1-516-512-3133

 Email: info@creative-biomart.com  Fax: 1-631-938-8127

 45-1 Ramsey Road, Shirley, NY 11967, USA