

Recombinant Human TMEM169 Protein, MYC/DDK-tagged, C13 and N15-labeled

Cat. No. TMEM169-405H **Lot. No.** (See product label)

SPECIFICATION

Product Overview	TMEM169 MS Standard C13 and N15-labeled recombinant protein (NP_612399) with a C-terminal MYC/DDK tag, was expressed in HEK293 cells.
Species	Human
Source	HEK293
Description	Biased expression in brain (RPKM 3.2), thyroid (RPKM 1.2) and 12 other tissues.
Molecular Mass	33.6 kDa
AA Sequence	MEEPTAVEGQVQLPSPHQGSLRKAVAAALALDGESTMGHRKKKRKESRPESIIYRS DNEKTDEEPGESEGGDQPKEEEGDDFLDYPVDDDMWNLPLDSRYVTLTGTITRGK KKGQMVDIHVTLTEKELQELTKPKESSRETTPEGRMACQMGADRGPHVVLWTLICL PVVFILSFVVSFYFGTITWYNIFLVYNEERTFWHKISYCPCLVLFYPVLIMAMASSLGL YAAVVQLSWSWEAWWQAARDMEKGFGLWLCGLGLEDCSPYSIVELLESDNISST LSNKDPIQEVETSTVTRTRPLEQKLISEEDLAANDILDYKDDDDKV
Purity	> 80% as determined by SDS-PAGE and Coomassie blue staining
Stability	Stable for 3 months from receipt of products under proper storage and handling conditions.
Storage	Store at -80 centigrade. Avoid repeated freeze-thaw cycles.

 Tel: 1-631-559-9269 1-516-512-3133

 Email: info@creative-biomart.com  Fax: 1-631-938-8127

 45-1 Ramsey Road, Shirley, NY 11967, USA

Concentration 50 µg/mL as determined by BCA

Storage Buffer 100 mM glycine, 25 mM Tris-HCl, pH 7.3.

GENE INFORMATION

Gene Name TMEM169 transmembrane protein 169 [Homo sapiens (human)]

Official Symbol TMEM169

Synonyms TMEM169; transmembrane protein 169; transmembrane protein 169

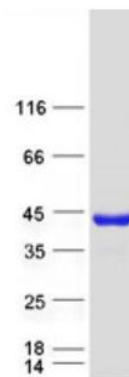
Gene ID 92691

mRNA Refseq NM_138390

Protein Refseq NP_612399

UniProt ID Q96HH4

SDS-PAGE



 Tel: 1-631-559-9269 1-516-512-3133

 Email: info@creative-biomart.com  Fax: 1-631-938-8127

 45-1 Ramsey Road, Shirley, NY 11967, USA