

# Recombinant Human TMEM17 Protein, Myc/DDK-tagged, C13 and N15-labeled

**Cat. No.** TMEM17-6091H    **Lot. No.** (See product label)

## SPECIFICATION

|                         |   |
|-------------------------|---|
| <b>Product Overview</b> | TMEM17 MS Standard C13 and N15-labeled recombinant protein (NP_938017) with a C-terminal MYC/DDK tag, was expressed in HEK293 cells.  |
| <b>Species</b>          | Human   |
| <b>Source</b>           | HEK293  |
| <b>Description</b>      | TMEM17 (Transmembrane Protein 17) is a Protein Coding gene. Diseases associated with TMEM17 include Orofaciodigital Syndrome I and Joubert Syndrome 14. An important paralog of this gene is TMEM80.  |
| <b>Molecular Mass</b>   | 23.1 kDa  |
| <b>AA Sequence</b>      | MELPDPVRQRLGNFSRAVFSDSNRTSPESNEGPENEMVSSLALQMSLYFNTYYFPL<br>WWVSSIMMLHMKYSILPDYYKFIVITVIILITLIEAIRLYLGYVGNLQEKVPELAGFWLLS<br>LLLQLPLILFLLFNEGLTNLPLEKAIHIIFTLFLAFQVVA AFLTLRKMVNQLAVRFHLQDF<br>DRLSANRGDMRRMRSCIEITRTRPLEQKLISEEDLAANDILDYKDDDDKV |
| <b>Purity</b>           | > 80% as determined by SDS-PAGE and Coomassie blue staining   |
| <b>Stability</b>        | Stable for 3 months from receipt of products under proper storage and handling conditions.  |
| <b>Storage</b>          | Store at -80 centigrade. Avoid repeated freeze-thaw cycles.   |

 Tel: 1-631-559-9269    1-516-512-3133

 Email: [info@creative-biomart.com](mailto:info@creative-biomart.com)     Fax: 1-631-938-8127

 45-1 Ramsey Road, Shirley, NY 11967, USA

**Concentration** 50 µg/mL as determined by BCA

**Storage Buffer** 100 mM glycine, 25 mM Tris-HCl, pH 7.3.

## GENE INFORMATION

**Gene Name** TMEM17 transmembrane protein 17 [ Homo sapiens (human) ]

**Official Symbol** TMEM17

**Synonyms** TMEM17; transmembrane protein 17; FLJ34583;

**Gene ID** 200728

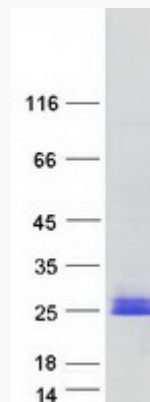
**mRNA Refseq** NM\_198276

**Protein Refseq** NP\_938017

**MIM** 614950

**UniProt ID** Q86X19

## SDS-PAGE



 Tel: 1-631-559-9269 1-516-512-3133

 Email: [info@creative-biomart.com](mailto:info@creative-biomart.com)  Fax: 1-631-938-8127

 45-1 Ramsey Road, Shirley, NY 11967, USA