

Recombinant Human TMEM215 Protein, Myc/DDK-tagged, C13 and N15-labeled

Cat. No. TMEM215-4885H **Lot. No.** (See product label)

SPECIFICATION

Product Overview	TMEM215 MS Standard C13 and N15-labeled recombinant protein (NP_997723) with a C-terminal MYC/DDK tag, was expressed in HEK293 cells.
Species	Human
Source	HEK293
Description	TMEM215 (Transmembrane Protein 215) is a Protein Coding gene.
Molecular Mass	25.6 kDa
AA Sequence	MRPDDINPRTGLVVALVSVFLVFGFMFTVSGMKGETLGNIPLLAIGPAICLPGIAIAL ARKTEGCTKRPENELLWVRKLPFCFRKPKDKEVVELLRTPSDLESGKGSSEDELA KKA GLRGKPPPQSQGEVSVASSINSPTPTTEEGECQSLVQNGHQEETSRYL DGYCPSGS SLTYSALDVKCSARDRSECPEPEDSIFVFPQDSIIVCSYKQNSPY DRYCCYINQIQGR WDHETIVTRTRPLEQKLISEEDLAANDILDYKDDDDKV
Purity	> 80% as determined by SDS-PAGE and Coomassie blue staining
Stability	Stable for 3 months from receipt of products under proper storage and handling conditions.
Storage	Store at -80 centigrade. Avoid repeated freeze-thaw cycles.

 Tel: 1-631-559-9269 1-516-512-3133

 Email: info@creative-biomart.com  Fax: 1-631-938-8127

 45-1 Ramsey Road, Shirley, NY 11967, USA

Concentration 50 µg/mL as determined by BCA

Storage Buffer 100 mM glycine, 25 mM Tris-HCl, pH 7.3.

GENE INFORMATION

Gene Name TMEM215 transmembrane protein 215 [Homo sapiens (human)]

Official Symbol TMEM215

Synonyms TMEM215; transmembrane protein 215; transmembrane protein 215

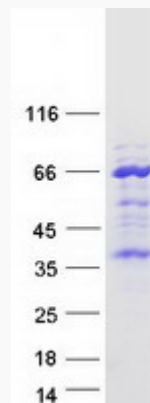
Gene ID 401498

mRNA Refseq NM_212558

Protein Refseq NP_997723

UniProt ID Q68D42

SDS-PAGE



 Tel: 1-631-559-9269 1-516-512-3133

 Email: info@creative-biomart.com  Fax: 1-631-938-8127

 45-1 Ramsey Road, Shirley, NY 11967, USA