

Recombinant Human TMEM25 Protein (27-322 aa), His-SUMO-tagged

Cat. No. TMEM25-837H **Lot. No.** (See product label)

SPECIFICATION

Product Overview	Recombinant Human TMEM25 Protein (27-322 aa) is produced by E. coli expression system. This protein is fused with a 6xHis-SUMO tag at the N-terminal. Research Area: Cell Biology. Protein Description: Full Length of Mature Protein.
Species	Human
Source	E.coli
ProteinLength	27-322 aa
Form	Tris-based buffer, 50% glycerol
Molecular Mass	48.2 kDa
AA Sequence	ELEPQIDGQTWAERALRENERHAFTCRVAGGPGTPRLAWYLDGQLQEASTSRLLS VGGEAFSGGTSTFTVTAHRAQHELNCSLQDPRSGRSANASVILNVQFKPEIAQVGA KYQEAQGPGLLVVLFALVRANPPANVTWIDQDGPVTVNTSDFLVLDAQNYPWLTNH TVQLQLRSLAHNLSVVA TNDVGVTASLPAPGPSRHP SLISSDSNNLKLNNVRLPRE NMSLPSNLQLNDLTPDSRAVKPADRQMAQNNSRPELLDPEPGLLTSQGFIRLPVL GYIYRVSSVSSDEIWL
Purity	> 90% as determined by SDS-PAGE.
Notes	Repeated freezing and thawing is not recommended. Store working aliquots at 4

 Tel: 1-631-559-9269 1-516-512-3133

 Email: info@creative-biomart.com  Fax: 1-631-938-8127

 45-1 Ramsey Road, Shirley, NY 11967, USA

centigrade for up to one week.

Storage

The shelf life is related to many factors, storage state, buffer ingredients, storage temperature and the stability of the protein itself. Generally, the shelf life of liquid form is 6 months at -20 centigrade/-80 centigrade. The shelf life of lyophilized form is 12 months at -20 centigrade/-80 centigrade.

Concentration

A hardcopy of COA with concentration instruction is sent along with the products.

GENE INFORMATION

Gene Name [TMEM25 transmembrane protein 25 \[Homo sapiens \(human\) \]](#)

Official Symbol [TMEM25](#)

Synonyms [TMEM25](#); [transmembrane protein 25](#); [0610039J01Rik](#)

Gene ID [84866](#)

mRNA Refseq [NM_001144034](#)

Protein Refseq [NP_001137506](#)

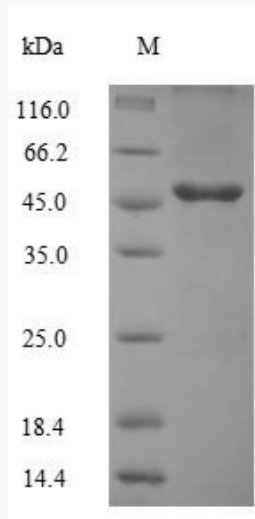
MIM [613934](#)

UniProt ID [Q86YD3](#)

 Tel: 1-631-559-9269 1-516-512-3133

 Email: info@creative-biomart.com  Fax: 1-631-938-8127

 45-1 Ramsey Road, Shirley, NY 11967, USA



(Tris-Glycine gel) Discontinuous SDS-PAGE (reduced) with 5% enrichment gel and 15% separation gel.

 Tel: 1-631-559-9269 1-516-512-3133

 Email: info@creative-biomart.com  Fax: 1-631-938-8127

 45-1 Ramsey Road, Shirley, NY 11967, USA