

Recombinant Human TMEM252 Protein, Myc/DDK-tagged, C13 and N15-labeled

Cat. No. TMEM252-2467H **Lot. No.** (See product label)

SPECIFICATION

Product Overview	C9orf71 MS Standard C13 and N15-labeled recombinant protein (NP_694969) with a C-terminal MYC/DDK tag, was expressed in HEK293 cells.
Species	Human
Source	HEK293
Description	TMEM252 (Transmembrane Protein 252) is a Protein Coding gene. Diseases associated with TMEM252 include Frontotemporal Dementia And/Or Amyotrophic Lateral Sclerosis 1.
Molecular Mass	18.5 kDa
AA Sequence	MQNRTGLILCALALLMGFLMVCLGAFFISWGSIFDCQGSLIAAYLLLPLGFVILLSGIF WSNYRQVTESKGVLRHMLRQHLAGALPVATVDRPDFYPPAYEESLEVEKQSCPA EREASGIPPLYTETGLEFQDGNDSHPEAPPSYRESIAGLVVTAISEDAQRRGQECT RTRPLEQKLISEEDLAANDILDYKDDDDKV
Purity	> 80% as determined by SDS-PAGE and Coomassie blue staining
Stability	Stable for 3 months from receipt of products under proper storage and handling conditions.
Storage	Store at -80 centigrade. Avoid repeated freeze-thaw cycles.

 Tel: 1-631-559-9269 1-516-512-3133

 Email: info@creative-biomart.com  Fax: 1-631-938-8127

 45-1 Ramsey Road, Shirley, NY 11967, USA

Concentration 50 µg/mL as determined by BCA

Storage Buffer 100 mM glycine, 25 mM Tris-HCl, pH 7.3.

GENE INFORMATION

Gene Name TMEM252 transmembrane protein 252 [Homo sapiens (human)]

Official Symbol TMEM252

Synonyms TMEM252; transmembrane protein 252; C9orf71; transmembrane protein 252; transmembrane protein C9orf71

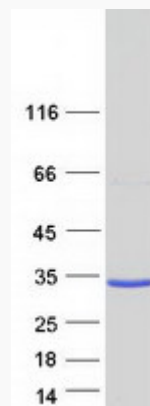
Gene ID 169693

mRNA Refseq NM_153237

Protein Refseq NP_694969

UniProt ID Q8N6L7

SDS-PAGE



Tel: 1-631-559-9269 1-516-512-3133

Email: info@creative-biomart.com Fax: 1-631-938-8127

45-1 Ramsey Road, Shirley, NY 11967, USA