

Recombinant Full Length Human TMEM33 Protein, N-GST-tagged

Cat. No. TMEM33-15HFL Lot. No. (See product label)

SPECIFICATION

Product Overview	Recombinant Full Length Human TMEM33 Protein, fused to GST-tag at N-terminus, was expressed in Wheat Germ (in vitro).
Species	Human
Source	Wheat Germ
ProteinLength	1-247 aa
Description	Involved in positive regulation of endoplasmic reticulum unfolded protein response; regulation of endoplasmic reticulum tubular network organization; and response to endoplasmic reticulum stress. Located in endoplasmic reticulum membrane; melanosome; and nuclear envelope. Is integral component of endoplasmic reticulum membrane.
Form	50 mM Tris-HCl, 10 mM reduced Glutathione, pH=8.0 in the elution buffer.
Molecular Mass	54.4 kDa
AA Sequence	MADTTPNGPQGAGAVQFMMTNKLDTAMWLSRLFTVYCSALFVLP LLGLHEAASFY QRALLANALTSALRLHQRLPHFQLSRAFLAQALLEDSCHYLLYSLIFVNSYPVTMSIFP VLLFSLHAATYTKKVL DARGSNLPLLRSVLDKLSANQQNILKFIACNEIFLMPATVF MLFSGQG SLLQPFIIYRFLTLRYSSRRNPYCRTL FNELRIVVEHIIMKPACPLFVRRLC LQSI AFISRLAPTVP

 Tel: 1-631-559-9269 1-516-512-3133

 Email: info@creative-biomart.com  Fax: 1-631-938-8127

 45-1 Ramsey Road, Shirley, NY 11967, USA



Applications	Enzyme-linked Immunoabsorbent Assay Western Blot (Recombinant protein) Antibody Production Protein Array
Notes	Best use within three months from the date of receipt of this protein.
Storage	Store at -80 centigrade. Aliquot to avoid repeated freezing and thawing.

GENE INFORMATION

Gene Name	TMEM33 transmembrane protein 33 [Homo sapiens (human)]
Official Symbol	TMEM33
Synonyms	TMEM33; transmembrane protein 33; Pom33; SHINC3; SHINC-3; 1600019D15Rik; FLJ10525; TMEM33-15HFL
Gene ID	55161
mRNA Refseq	NM_018126.3
Protein Refseq	NP_060596.2
MIM	618515
UniProt ID	P57088

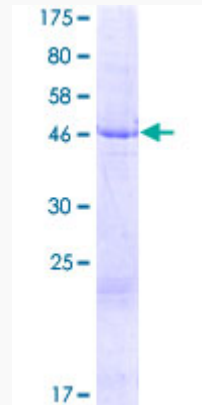
Tel: 1-631-559-9269 1-516-512-3133

Email: info@creative-biomart.com Fax: 1-631-938-8127

45-1 Ramsey Road, Shirley, NY 11967, USA



SDS-PAGE



12.5% SDS-PAGE Stained with Coomassie Blue.

Tel: 1-631-559-9269 1-516-512-3133

Email: info@creative-biomart.com Fax: 1-631-938-8127

45-1 Ramsey Road, Shirley, NY 11967, USA