

# Recombinant Human TMEM33 Protein, Full Length, N-GST tagged

Cat. No. TMEM33-32HFL Lot. No. (See product label)

## SPECIFICATION

<b>Product Overview</b>	Human TMEM33 full-length ORF ( AAH00948.2, 1 a.a. - 247 a.a.) recombinant protein with GST-tag at N-terminal was expressed in Wheat Germ.
<b>Species</b>	Human
<b>Source</b>	Wheat Germ
<b>ProteinLength</b>	Full Length
<b>Description</b>	Involved in positive regulation of endoplasmic reticulum unfolded protein response; regulation of endoplasmic reticulum tubular network organization; and response to endoplasmic reticulum stress. Located in endoplasmic reticulum membrane; melanosome; and nuclear envelope. Is integral component of endoplasmic reticulum membrane.
<b>Molecular Mass</b>	54.4 kDa
<b>AA Sequence</b>	MADTTPNGPQGAGAVQFMMTNKLDTAMWLSRLFTVYCSALFVLP LLGLHEAASFY QRALLANALTSALRLHQRLPHFQLSRAFLAQALLED SCHYLLYSLIFVNSYPVTMSIFP VLLF SLLHAATYTKKVL DARGSNLPLLR SVLDKLSANQQN ILKFIACNEIFLMPATVF MLFSGQG SLLQPFIIYRFL TLRYSRRNPY CRTLFNELRIVVEHIIMKPACPLFVRRLC LQSI AFISRLAPTVP
<b>Applications</b>	Enzyme-linked Immunoabsorbent Assay

 Tel: 1-631-559-9269 1-516-512-3133

 Email: [info@creative-biomart.com](mailto:info@creative-biomart.com)  Fax: 1-631-938-8127

 45-1 Ramsey Road, Shirley, NY 11967, USA

Western Blot (Recombinant protein)  
 Antibody Production  
 Protein Array

<b>Notes</b>	Best use within three months from the date of receipt of this protein.
<b>Storage</b>	Store at -80 centigrade. Aliquot to avoid repeated freezing and thawing.
<b>Storage Buffer</b>	50 mM Tris-HCl, 10 mM reduced Glutathione, pH 8.0 in the elution buffer.

## GENE INFORMATION

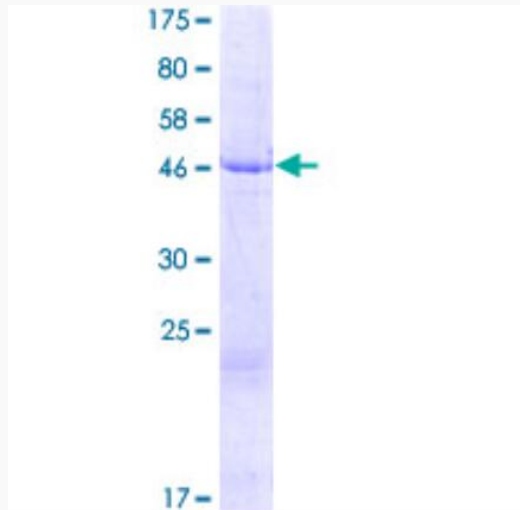
<b>Gene Name</b>	TMEM33 transmembrane protein 33 [ Homo sapiens (human) ]
<b>Official Symbol</b>	TMEM33
<b>Synonyms</b>	TMEM33; transmembrane protein 33; Pom33; SHINC3; SHINC-3; 1600019D15Rik; transmembrane protein 33
<b>Gene ID</b>	55161
<b>mRNA Refseq</b>	NM_018126
<b>Protein Refseq</b>	NP_060596
<b>MIM</b>	618515
<b>UniProt ID</b>	P57088

 Tel: 1-631-559-9269 1-516-512-3133

 Email: [info@creative-biomart.com](mailto:info@creative-biomart.com)  Fax: 1-631-938-8127

 45-1 Ramsey Road, Shirley, NY 11967, USA

**Quality Control  
Testing**



12.5% SDS-PAGE Stained with Coomassie Blue.

 Tel: 1-631-559-9269 1-516-512-3133

 Email: [info@creative-biomart.com](mailto:info@creative-biomart.com)  Fax: 1-631-938-8127

 45-1 Ramsey Road, Shirley, NY 11967, USA