

Recombinant Human TMEM59 Full Length Transmembrane protein (37-323 aa), His-tagged

Cat. No. TMEM59-2717H Lot. No. (See product label)

SPECIFICATION

Product Overview	Recombinant Human TMEM59 Protein (37-323 aa) is produced by in vitro E. coli expression system. This protein is fused with a 10xHis tag at the C-terminal.
Species	Human
Source	E.coli
ProteinLength	37-323aa
Form	If the delivery form is liquid, the default storage buffer is Tris/PBS-based buffer, 5%-50% glycerol. If the delivery form is lyophilized powder, the buffer before lyophilization is Tris/PBS-based buffer, 6% Trehalose, pH 8.0.
Molecular Mass	35.5kDa
AA Sequence	AFDSVLGDTASCHRACQLTYPLHTYPKEEELYACQRCRLFSICQFVDDGIDLNRTK LECESACTEAYSQSDEQYACHLGCQNQLPFAELRQEQLMSLMPKMHLFPPLTLVRS FWSDMMDSAQSFITSSWTFYLQADDGKIVIFQSKPEIQYAPHLEQEPTNLRESSLSK MSYLQMRNSQAHRNFLEDGESDGFLRCLSLNSGWILTTTLVLSVMVLLWICCATVAT AVEQYVPSEKLSIYGDLEFMNEQKLNRYPASSLVVRSKTEDHEEAGPLPTKVNLAH SEI
Purity	Greater than 90% as determined by SDS-PAGE.

 Tel: 1-631-559-9269 1-516-512-3133

 Email: info@creative-biomart.com  Fax: 1-631-938-8127

 45-1 Ramsey Road, Shirley, NY 11967, USA

Storage	Store at -20°C/-80°C upon receipt, aliquoting is necessary for mutiple use. Avoid repeated freeze-thaw cycles.
Reconstitution	Please reconstitute protein in deionized sterile water to a concentration of 0.1-1.0 mg/mL. We recommend to add 5-50% of glycerol (final concentration) and aliquot for long-term storage at -20°C/-80°C. Our default final concentration of glycerol is 50%.

GENE INFORMATION

Gene Name	TMEM59 transmembrane protein 59 [Homo sapiens]
Official Symbol	TMEM59
Synonyms	TMEM59; transmembrane protein 59; C1orf8, chromosome 1 open reading frame 8; HSPC001; liver membrane-bound protein; C1orf8; FLJ42977;
Gene ID	9528
mRNA Refseq	NM_004872
Protein Refseq	NP_004863
UniProt ID	Q9BXS4

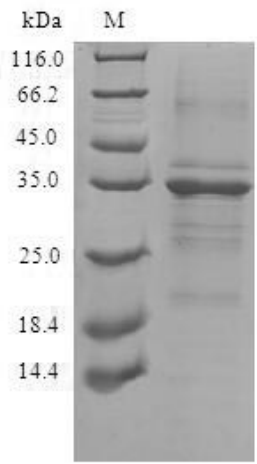
 Tel: 1-631-559-9269 1-516-512-3133

 Email: info@creative-biomart.com  Fax: 1-631-938-8127

 45-1 Ramsey Road, Shirley, NY 11967, USA



SDS-PAGE



Tel: 1-631-559-9269 1-516-512-3133

Email: info@creative-biomart.com Fax: 1-631-938-8127

45-1 Ramsey Road, Shirley, NY 11967, USA