

Recombinant Human TMEM65 Transmembrane protein, His-SUMO-tagged

Cat. No. TMEM65-2402H **Lot. No.** (See product label)

SPECIFICATION

Product Overview	Recombinant Human TMEM65 protein(Q6PI78)(63-240aa), fused to N-terminal His-SUMO tag, was expressed in E. coli.
Species	Human
Source	E.coli
ProteinLength	63-240aa
Form	If the delivery form is liquid, the default storage buffer is Tris/PBS-based buffer, 5%-50% glycerol. If the delivery form is lyophilized powder, the buffer before lyophilization is Tris/PBS-based buffer, 6% Trehalose, pH 8.0.
Molecular Mass	35.1kDa
AA Sequence	MEALNTAQQGARDFIYSLHSTERSCLLKELHRFESIAIAQEKLEAPPPTPGQLRYVFIHN AIPFIGFGFLDNAMIVAGTHIEMSIGIILGISTMAAAAALGNLVSDLAGLGLAGYVEALAS RLGLSIPDLTPKQVDMWQTRLSTHLGKAVGVTIGCILGMFPLIFFGGGEEDEKLETKS
Purity	Greater than 90% as determined by SDS-PAGE.
Storage	Store at -20°C/-80°C upon receipt, aliquoting is necessary for mutiple use. Avoid repeated freeze-thaw cycles.

 Tel: 1-631-559-9269 1-516-512-3133

 Email: info@creative-biomart.com  Fax: 1-631-938-8127

 45-1 Ramsey Road, Shirley, NY 11967, USA

Reconstitution

Please reconstitute protein in deionized sterile water to a concentration of 0.1-1.0 mg/mL. We recommend to add 5-50% of glycerol (final concentration) and aliquot for long-term storage at -20°C/-80°C. Our default final concentration of glycerol is 50%.

GENE INFORMATION

Gene Name [TMEM65 transmembrane protein 65 \[Homo sapiens \]](#)

Official Symbol [TMEM65](#)

Synonyms TMEM65; transmembrane protein 65;

Gene ID [157378](#)

mRNA Refseq [NM_194291](#)

Protein Refseq [NP_919267](#)

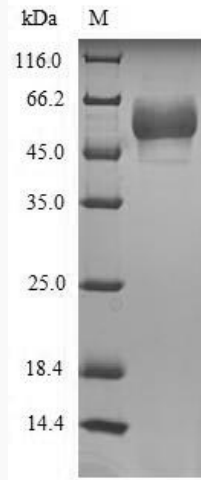
UniProt ID [Q6PI78](#)

 Tel: 1-631-559-9269 1-516-512-3133

 Email: info@creative-biomart.com  Fax: 1-631-938-8127

 45-1 Ramsey Road, Shirley, NY 11967, USA

SDS-PAGE



 Tel: 1-631-559-9269 1-516-512-3133

 Email: info@creative-biomart.com  Fax: 1-631-938-8127

 45-1 Ramsey Road, Shirley, NY 11967, USA