

# Recombinant Human TMOD1 Protein, Myc/DDK-tagged, C13 and N15-labeled

Cat. No. TMOD1-4197H Lot. No. (See product label)

## SPECIFICATION

<b>Product Overview</b>	TMOD1 MS Standard C13 and N15-labeled recombinant protein (NP_003266) with a C-terminal MYC/DDK tag, was expressed in HEK293 cells.
<b>Species</b>	Human
<b>Source</b>	HEK293
<b>Description</b>	This gene encodes a member of the tropomodulin family. The encoded protein is an actin-capping protein that regulates tropomyosin by binding to its N-terminus, inhibiting depolymerization and elongation of the pointed end of actin filaments and thereby influencing the structure of the erythrocyte membrane skeleton. Multiple transcript variants encoding the same protein have been found for this gene.
<b>Molecular Mass</b>	40.6 kDa
<b>AA Sequence</b>	MSYRRELEKYRDLDEDKILGALTEELRTLENELDELDPDNALLPAGLRQKDQTTKA PTGPFKREELLDHLEKQAKEFKDREDLVPYTGEKRGKVVWPKQKPLDPVLESVTLE PELEEALANASDAELCDIAAILGMHTLMSNQYYQALSSSSIMNKEGLNSVIKPTQYK PVPDEEPNSTDVEETLERIKNNDPKLEEVNLLNIRNIPIPTLKAYAEALKENSYVKKFSI VGTRSNDPVAYALAEMLKENVLKLTLNVESNFISGAGILRLVEALPYNTSLVEMKIDN QSQPLGNKVEMEIVSMLEKNATLLKFGYHFTQQGPRLRASNAMMNNNDLVRKRRL ADLTGPIPKCRSGVTRTRPLEQKLISEEDLAANDILDYKDDDDKV
<b>Purity</b>	> 80% as determined by SDS-PAGE and Coomassie blue staining

 Tel: 1-631-559-9269 1-516-512-3133

 Email: [info@creative-biomart.com](mailto:info@creative-biomart.com)  Fax: 1-631-938-8127

 45-1 Ramsey Road, Shirley, NY 11967, USA

<b>Stability</b>	Stable for 3 months from receipt of products under proper storage and handling conditions.
<b>Storage</b>	Store at -80 centigrade. Avoid repeated freeze-thaw cycles.
<b>Concentration</b>	50 µg/mL as determined by BCA
<b>Storage Buffer</b>	100 mM glycine, 25 mM Tris-HCl, pH 7.3.
<b>GENE INFORMATION</b>	
<b>Gene Name</b>	TMOD1 tropomodulin 1 [ Homo sapiens (human) ]
<b>Official Symbol</b>	TMOD1
<b>Synonyms</b>	TMOD1; tropomodulin 1; D9S57E, TMOD; tropomodulin-1; ETMOD; E-Tmod; e-tropomodulin; erythrocyte tropomodulin; TMOD; D9S57E;
<b>Gene ID</b>	7111
<b>mRNA Refseq</b>	NM_003275
<b>Protein Refseq</b>	NP_003266
<b>MIM</b>	190930
<b>UniProt ID</b>	P28289

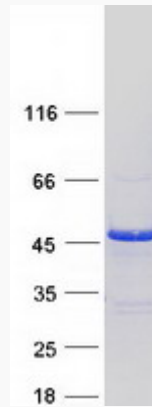
 Tel: 1-631-559-9269 1-516-512-3133

 Email: [info@creative-biomart.com](mailto:info@creative-biomart.com)  Fax: 1-631-938-8127

 45-1 Ramsey Road, Shirley, NY 11967, USA



SDS-PAGE



Tel: 1-631-559-9269 1-516-512-3133

Email: [info@creative-biomart.com](mailto:info@creative-biomart.com) Fax: 1-631-938-8127

45-1 Ramsey Road, Shirley, NY 11967, USA