

## Recombinant Human TMPRSS15 Protein, His-tagged

Cat. No. TMPRSS15-001H Lot. No. (See product label)

### SPECIFICATION

<b>Product Overview</b>	Recombinant Human TMPRSS15 Protein with His tag was expressed in HEK293.
<b>Species</b>	Human
<b>Source</b>	HEK293
<b>ProteinLength</b>	41-1019 aa
<b>Description</b>	This gene encodes an enzyme that converts the pancreatic proenzyme trypsinogen to trypsin, which activates other proenzymes including chymotrypsinogen and procarboxypeptidases. The precursor protein is cleaved into two chains that form a heterodimer linked by a disulfide bond. This protein is a member of the trypsin family of peptidases. Mutations in this gene cause enterokinase deficiency, a malabsorption disorder characterized by diarrhea and failure to thrive.
<b>AASequence</b>	<pre> HHHHHHHHGSGSGSLTIKESQRGAALGQSHEARATFKITSGVTYNPNLQDKLSVDF KVLAFDLQQMIDEIFLSSNLKNEYKNSRVLQFENGSIIVVFDLFFAQWVSDENVKEELI QGLEANKSSQLVTFHIDLNSVDILDKLTSTSHLATPGNVSIECLPGSSPCTDALTCIKA DLFCDGEVNC PDGSD EDNKMCATVCDGRFLT GSSGSFQATHYPK PSETSVVCQW IIRVNQGLSIKLSFDDFNTYYTDILDIYEGVGSSKILRASIWETNPGTIRIFSNQVTATFLI ESDESDYVGFNATYAFNSSSELNNEYKINCNFEDGFCFWVQDLNDDNEWERIQGST FSPFTGPNFDHTFGNASGFYISTPTGPGGRQERVGLLSLPLDPTLEPACLSFWYHM YGENVHKLSINISNDQNMEKTVFQKEGNYGDNWNYGQVTLNETVKFKVAFNAFKNK ILSDIALDDISLTYGICNGSLYPEPTLVPTPPPELPTDCGGPFELWEPNTTFSSTNFPN </pre>

 Tel: 1-631-559-9269 1-516-512-3133

 Email: [info@creative-biomart.com](mailto:info@creative-biomart.com)  Fax: 1-631-938-8127

 45-1 Ramsey Road, Shirley, NY 11967, USA

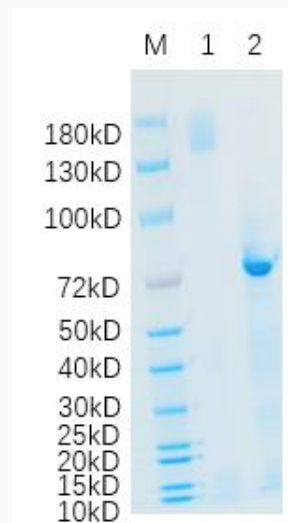
SYPNLAFCVWILNAQKGKNIQLHFQEFDLNINDVVEIRDGEEADSLLLAVYTGPGPV  
 KDVFSTTNRMTVLLITNDVLRGGFKANFTTGYHLGIPEPCKADHFQCKNGECVPLV  
 NLCDGHLHCEDGSDEADCVRFFNGTTNNGLVRFRIQSIWHTACAENWTTQISNDV  
 CQLLGLGSGNSSKPIFPTDGGPFVKLNTAPDGHILTPSQQLQDSLIRLQCNHKSC  
 GKKLAAQDITPKIVGGSNAKEGAWPWVVGLYYGGRLLCGASLVSSDWLVSAAHCV  
 YGRNLEPSKWTAI LGLHMKSNLTSPQTVPRIDEIVINPHYNRRRKDNDIAMMHLEFK  
 VNYTDYIQPICLPEENQVFPGRNCSIAGWGTVVYQGTTANILQEADVPLLSNERCQ  
 QQMPEYNITENMICAGYEEGGIDSCQGDSSGGLMCCQENNRWFLAGVTSFGYKCAL  
 PNRPGVYARVSRFTEWISFLH

<b>Molecular Mass</b>	110 kDa
<b>Endotoxin</b>	< 1 EU/μg of protein determined by LAL method
<b>Purity</b>	> 90% by SDS-PAGE
<b>Storage</b>	Store it under sterile conditions at -20 to -80 centigrade. It is recommended that the protein be aliquoted for optimal storage. Avoid repeated freeze-thaw cycles.
<b>Storage Buffer</b>	Sterile PBS, pH7.4
<b>Concentration</b>	1 mg/mL by BCA

## GENE INFORMATION

<b>Gene Name</b>	TMPRSS15 transmembrane serine protease 15 [ Homo sapiens (human) ]
<b>Official Symbol</b>	TMPRSS15
<b>Synonyms</b>	TMPRSS15; transmembrane serine protease 15; ENTK; PRSS7; enteropeptidase; enterokinase catalytic subunit; protease, serine, 7 (enterokinase); serine protease 7;

transmembrane protease, serine 15; EC 3.4.21.9

**Gene ID** 5651**mRNA Refseq** NM\_002772**Protein Refseq** NP\_002763**MIM** 606635**UniProt ID** P98073**SDS-PAGE**

Reducing 4%-20% SDS-PAGE (CBB stained) analysis profiles of purified Tmprss15. 1. Tmprss15: 1  $\mu$ g 2. BSA: 1  $\mu$ g

 Tel: 1-631-559-9269 1-516-512-3133 Email: [info@creative-biomart.com](mailto:info@creative-biomart.com)  Fax: 1-631-938-8127 45-1 Ramsey Road, Shirley, NY 11967, USA