

Recombinant Bovine TMPRSS15 Protein, His-tagged

Cat. No. TMPRSS15-019B Lot. No. (See product label)

SPECIFICATION

Product Overview	Recombinant bovine C-terminal His-tagged bovine TMPRSS15 protein (801-1035) was expressed in yeast.
Species	Bovine
Source	Yeast
ProteinLength	801-1035
Description	Responsible for initiating activation of pancreatic proteolytic proenzymes (trypsin, chymotrypsin and carboxypeptidase A). It catalyzes the conversion of trypsinogen to trypsin which in turn activates other proenzymes including chymotrypsinogen, procarboxypeptidases, and proelastases.
Form	Lyophilized
Molecular Mass	27.1 kDa
Endotoxin	<1.0 EU/ µg, determined by the LAL endotoxin assay.
Purity	≥95% as determined by SDS-PAGE
Stability	≥ 6 months
Storage	At -80 centigrade.

 Tel: 1-631-559-9269 1-516-512-3133

 Email: info@creative-biomart.com  Fax: 1-631-938-8127

 45-1 Ramsey Road, Shirley, NY 11967, USA

Storage Buffer Sterile 10 mM Tris-HCl, pH 7.2, with 2 mM calcium chloride, 100 mM sodium chloride, and 50% glycerol

GENE INFORMATION

Gene Name [TMPRSS15 transmembrane serine protease 15 \[Bos taurus \(cattle\) \]](#)

Official Symbol [TMPRSS15](#)

Synonyms TMPRSS15; transmembrane serine protease 15; PRSS7; enteropeptidase; enterokinase; protease, serine, 7 (enterokinase); serine protease 7; transmembrane protease, serine 15; EC 3.4.21.9

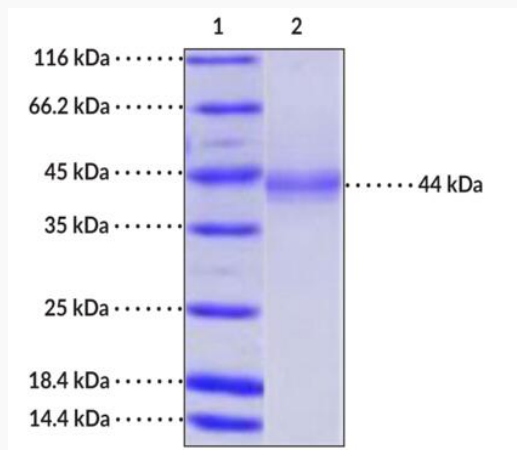
Gene ID [282009](#)

mRNA Refseq [NM_174439](#)

Protein Refseq [NP_776864](#)

UniProt ID [P98072](#)

SDS-PAGE Analysis of Enteropeptidase



 Tel: 1-631-559-9269 1-516-512-3133

 Email: info@creative-biomart.com  Fax: 1-631-938-8127

 45-1 Ramsey Road, Shirley, NY 11967, USA



Lane 1: MW Markers

Lane 2: Enteropeptidase

This protein has a calculated molecular weight of 27.1 kDa. It has an apparent molecular weight of approximately 44 kDa by SDS-PAGE under reducing conditions due to glycosylation.

 Tel: 1-631-559-9269 1-516-512-3133

 Email: info@creative-biomart.com  Fax: 1-631-938-8127

 45-1 Ramsey Road, Shirley, NY 11967, USA