

Active Recombinant Human TMPRSS15

Cat. No. TMPRSS15-1082H **Lot. No.** (See product label)

SPECIFICATION

Product Overview

Enhanced recombinant enterokinase light chain with 6 histidines expressed from modified human kidney cell line. Enterokinase (EK) is a specific protease that cleaves a protein after lysine residue at its recognition site: Asp-Asp-Asp-Asp-Lys. Enterokinase will not work if the recognition site is followed by proline. The rEKLx6 contains 6X His tags and can be removed from the cleavage reaction mixture by filtering through Nickel Cadmium column.

Species Pig

Source Human

Description

Enterokinase is a serine proteinase in the duodenum that plays a critical role in mammalian digestion. It is the physiological activator of pancreatic trypsinogen. It converts trypsinogen into its active form trypsin, by cleaving its aminoterminal hexapeptide Val(Asp)₄-Lys.

Purity > 95%

Endotoxin Level < 1.0 EU per 1 microgram of protein (determined by LAL method)

Activity Approximately > 50 Unit/mg. One unit will hydrolyze 1 umole of p-nitroaniline per minute at pH 8.0 at 37°C using 1mM of Gly-Pro p-nitroanilide as a substrate.

Application SDS-PAGE

 Tel: 1-631-559-9269 1-516-512-3133

 Email: info@creative-biomart.com  Fax: 1-631-938-8127

 45-1 Ramsey Road, Shirley, NY 11967, USA

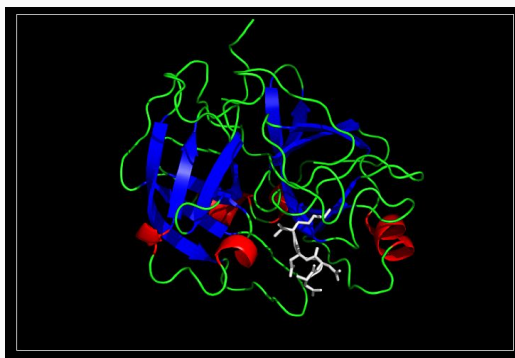
Storage Buffer	In 20 mM Tris-HCl, 100 mM NaCl, 1 mM EDTA, pH 8.0 (10% glycerol)
Storage	Store at 4°C for 1-2 weeks. For long term storage store at -20°C or -80°C. Aliquot to avoid repeated freezing and thawing.
Unitprot ID	P27487
GENE INFORMATION	
Gene Name	TMPRSS15 transmembrane protease, serine 15 [Homo sapiens]
Official Symbol	TMPRSS15
Synonyms	TMPRSS15; ENTK; PRSS7; MGC133046; enteropeptidase; enterokinase; serine protease 7; OTTHUMP00000083248; protease, serine, 7 (enterokinase)
Gene ID	5651
mRNA Refseq	NM_002772
Protein Refseq	NP_002763
MIM	606635
Chromosome Location	21q21; 21q21.1
Function	peptidase activity; scavenger receptor activity; serine-type endopeptidase activity

 Tel: 1-631-559-9269 1-516-512-3133

 Email: info@creative-biomart.com  Fax: 1-631-938-8127


 45-1 Ramsey Road, Shirley, NY 11967, USA

**Crystalstructure of
Enteropeptidase with
an inhibitor.**



 Tel: 1-631-559-9269 1-516-512-3133

 Email: info@creative-biomart.com  Fax: 1-631-938-8127

 45-1 Ramsey Road, Shirley, NY 11967, USA