

# Recombinant Human Transmembrane Protease, Serine 15

**Cat. No.** TmprSS15-1279H    **Lot. No.** (See product label)

## SPECIFICATION

<b>Product Overview</b>	<p>Enteropeptidase Human is a specific protease that cleaves after the sequence Asp-Asp-Aps-Aps-Lys. The light chain of enteropeptidase has full enzymatic activity. No other protease activity was detected. Human enteropeptidase binds specifically to STI-agarose. The affinity purified Human Enterokinase contains amino acids 785-1019.</p>
<b>Species</b>	Human
<b>Source</b>	Human
<b>Description</b>	<p>Enteropeptidase or enterokinase is an enzyme involved in human digestion. It is produced by cells in the duodenum wall, and is secreted from duodenum's glands, the crypts of Lieberk<sup>h</sup>n, whenever ingested food enters the duodenum from the stomach. Enteropeptidase has the critical job of turning trypsinogen (a zymogen) to trypsin, indirectly activating a number of pancreatic digestive enzymes.</p> <p>Enteropeptidase is a serine protease enzyme (EC3.4.21.9). Enteropeptidase is a part of the Chymotrypsin-clan of serine proteases, and is structurally similar to these proteins.</p>
<b>Form</b>	50mM Tris-HCl, pH 8.0, 0.5M NaCl, 1mM CaCl <sub>2</sub> and 50% glycerol.
<b>Purity</b>	Greater than 98.0% as determined by SDS-PAGE.
<b>Physical Appearance</b>	Liquid solution.

 Tel: 1-631-559-9269    1-516-512-3133

 Email: [info@creative-biomart.com](mailto:info@creative-biomart.com)     Fax: 1-631-938-8127

 45-1 Ramsey Road, Shirley, NY 11967, USA

**Storage** One year when stored at ?C20°C, three weeks at room temperature.

## GENE INFORMATION

**Gene Name** [TMPRSS15 transmembrane protease, serine 15 \[ Homo sapiens \]](#)

**Official Symbol** [TMPRSS15](#)

**Synonyms** TMPRSS15; transmembrane protease, serine 15; ENTK; PRSS7; MGC133046; enteropeptidase; enterokinase; serine protease 7; OTTHUMP00000083248; protease, serine, 7 (enterokinase); Enteropeptidase; Enterokinase; Serine protease 7; Transmembrane protease serine 15; EC 3.4.21.9; EC 3.4.21

**Gene ID** [5651](#)

**mRNA Refseq** [NM\\_002772](#)

**Protein Refseq** [NP\\_002763](#)

**MIM** [606635](#)

**UniProt ID** [P98073](#)

**Chromosome Location** 21q21; 21q21.1

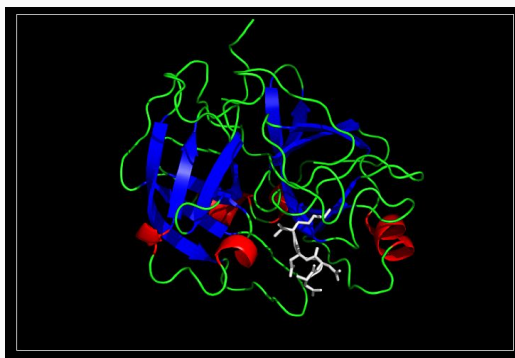
**Function** peptidase activity; scavenger receptor activity; serine-type endopeptidase activity

 Tel: 1-631-559-9269 1-516-512-3133

 Email: [info@creative-biomart.com](mailto:info@creative-biomart.com)  Fax: 1-631-938-8127

 45-1 Ramsey Road, Shirley, NY 11967, USA

**Crystalstructure of  
Enteropeptidase with  
an inhibitor**



 Tel: 1-631-559-9269 1-516-512-3133

 Email: [info@creative-biomart.com](mailto:info@creative-biomart.com)  Fax: 1-631-938-8127

 45-1 Ramsey Road, Shirley, NY 11967, USA