

## Recombinant Porcine Transmembrane Protease, Serine 15

Cat. No. TmprSS15-1281P Lot. No. (See product label)

### SPECIFICATION

**Product Overview**

Porcine enteropeptidase is a specific protease which cleaves after the lysine at its recognition site: Asp-Asp-Asp-Asp-Lys. Enterokinase will not cleave a site followed by proline. Theoretical Mw is 21,880 Dalton, the apparent Mw on SDS-PAGE is about 40 kDa. If a fusion tag is located in the N-terminus with an enterokinase site, enterokinase will be able to remove the fusion tag and to generate the protein exactly as you need without adding any unwanted residues. ProSpecrus enterokinase is a highly purified enterokinase from porcine. The enzyme has been extensively purified and tested to ensure that there are no other contaminating proteases.

**Species** Pig

**Source** Porcine

**Description**

Enteropeptidase or enterokinase is an enzyme involved in human digestion. It is produced by cells in the duodenum wall, and is secreted from duodenum's glands, the crypts of Lieberk<sup>h</sup>hn, whenever ingested food enters the duodenum from the stomach. Enteropeptidase has the critical job of turning trypsinogen(a zymogen) to trypsin, indirectly activating a number of pancreatic digestive enzymes. Enteropeptidase is a serine protease enzyme(EC3.4.21.9). Enteropeptidase is a part of the Chymotrypsin-clan of serine proteases, and is structurally similar to these proteins.

**Form** 2 IU/ $\mu$ l 50mM Tris-HCl, pH 8.0, 0.5M NaCl and 50% glycerol.

 Tel: 1-631-559-9269 1-516-512-3133

 Email: [info@creative-biomart.com](mailto:info@creative-biomart.com)  Fax: 1-631-938-8127

 45-1 Ramsey Road, Shirley, NY 11967, USA

**Physical Appearance** Sterile Liquid.

**Storage** One year when stored at -20°C, one week at room temperature.

## GENE INFORMATION

**Gene Name** [TMPRSS15 transmembrane protease, serine 15 \[ Homo sapiens \]](#)

**Official Symbol** [TMPRSS15](#)

**Synonyms** TMPRSS15; transmembrane protease, serine 15; ENTK; PRSS7; MGC133046; enteropeptidase; enterokinase; serine protease 7; OTTHUMP00000083248; protease, serine, 7 (enterokinase); Enteropeptidase; Enterokinase; Serine protease 7; Transmembrane protease serine 15; EC 3.4.21.9; EC 3.4.21

**Gene ID** [5651](#)

**mRNA Refseq** [NM\\_002772](#)

**Protein Refseq** [NP\\_002763](#)

**MIM** [606635](#)

**UniProt ID** [P98073](#)

**Chromosome Location** 21q21; 21q21.1

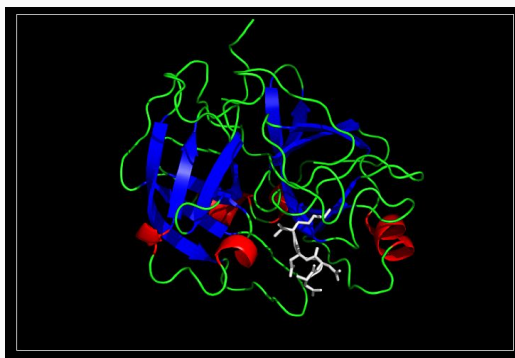
**Function** peptidase activity; scavenger receptor activity; serine-type endopeptidase activity

 Tel: 1-631-559-9269 1-516-512-3133

 Email: [info@creative-biomart.com](mailto:info@creative-biomart.com)  Fax: 1-631-938-8127

 45-1 Ramsey Road, Shirley, NY 11967, USA

**Crystalstructure of  
Enteropeptidase with  
an inhibitor**



 Tel: 1-631-559-9269 1-516-512-3133

 Email: [info@creative-biomart.com](mailto:info@creative-biomart.com)  Fax: 1-631-938-8127

 45-1 Ramsey Road, Shirley, NY 11967, USA