

Recombinant Mouse TMPRSS15 Protein (830-1069 aa), His-SUMO-tagged

Cat. No. TMPRSS15-2088M **Lot. No.** (See product label)

SPECIFICATION

Product Overview	Recombinant Mouse TMPRSS15 Protein (830-1069 aa) is produced by E. coli expression system. This protein is fused with a 6xHis-SUMO tag at the N-terminal. Research Area: Cell Biology. Protein Description: Partial.
Species	Mouse
Source	E.coli
ProteinLength	830-1069 aa
Description	Responsible for initiating activation of pancreatic proteolytic proenzymes (trypsin, chymotrypsin and carboxypeptidase A). It catalyzes the conversion of trypsinogen to trypsin which in turn activates other proenzymes including chymotrypsinogen, procarboxypeptidases, and proelastases.
Form	Tris-based buffer,50% glycerol
Molecular Mass	43.0 kDa
AA Sequence	IVGGSDAQAGAWPWVVALYHRDRSTDRLCCGASLVSSDWLVSAAHCVYRRNLDPT RWTAVLGLHMQSNLTSPQVVRRVVDQIVINPHYDRRRKVNDIAMMHLEFKVNYTDYI QPICLPEENQIFIPGRTCSIAGWGYDKINAGSTVDVLKEADVPLISNEKCCQQQLPEYNI TESMICAGYEEGGIDSCQGDSGGPLMCQENNRWFLVGVTSFGVQCALPNHPGVYV RVSQFIEWIHSFLH

 Tel: 1-631-559-9269 1-516-512-3133

 Email: info@creative-biomart.com  Fax: 1-631-938-8127

 45-1 Ramsey Road, Shirley, NY 11967, USA

Purity	> 90% as determined by SDS-PAGE.
Notes	Repeated freezing and thawing is not recommended. Store working aliquots at 4 centigrade for up to one week.
Storage	The shelf life is related to many factors, storage state, buffer ingredients, storage temperature and the stability of the protein itself. Generally, the shelf life of liquid form is 6 months at -20 centigrade/-80 centigrade. The shelf life of lyophilized form is 12 months at -20 centigrade/-80 centigrade.
Concentration	A hardcopy of COA with reconstitution instruction is sent along with the products.

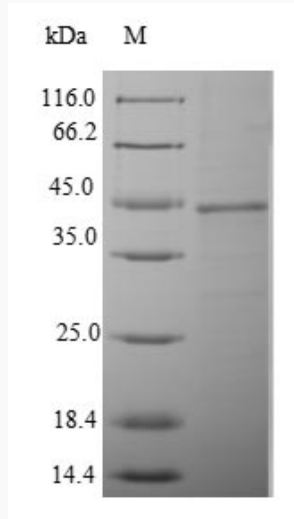
GENE INFORMATION

Gene Name	Tmprss15 transmembrane protease, serine 15 [<i>Mus musculus</i>]
Official Symbol	TMPRSS15
Synonyms	TMPRSS15; enteropeptidase; enterokinase; serine protease 7; Prss7; A130097D21Rik;
Gene ID	19146
mRNA Refseq	NM_008941
Protein Refseq	NP_032967
UniProt ID	P97435

 Tel: 1-631-559-9269 1-516-512-3133

 Email: info@creative-biomart.com  Fax: 1-631-938-8127

 45-1 Ramsey Road, Shirley, NY 11967, USA



(Tris-Glycine gel) Discontinuous SDS-PAGE (reduced) with 5% enrichment gel and 15% separation gel.

 Tel: 1-631-559-9269 1-516-512-3133

 Email: info@creative-biomart.com  Fax: 1-631-938-8127

 45-1 Ramsey Road, Shirley, NY 11967, USA