

Recombinant Cattle TMPRSS15 Protein, His-tagged

Cat. No. TMPRSS15-2134C Lot. No. (See product label)

SPECIFICATION

Product Overview	Recombinant Cattle TMPRSS15 Protein (Ile801-His1035) with N-His tag was expressed in E. coli.
Species	Cattle
Source	E.coli
ProteinLength	Ile801-His1035
Description	Responsible for initiating activation of pancreatic proteolytic proenzymes (trypsin, chymotrypsin and carboxypeptidase A). It catalyzes the conversion of trypsinogen to trypsin which in turn activates other proenzymes including chymotrypsinogen, procarboxypeptidases, and proelastases.
Form	Freeze-dried powder
Molecular Mass	Predicted Molecular Mass: 29.7 kDa Accurate Molecular Mass: 36 kDa
Purity	> 90%
Applications	Positive Control; Immunogen; SDS-PAGE; WB.
Stability	The thermal stability is described by the loss rate. The loss rate was determined by accelerated thermal degradation test, that is, incubate the protein at 37 centigrade for

 Tel: 1-631-559-9269 1-516-512-3133

 Email: info@creative-biomart.com  Fax: 1-631-938-8127

 45-1 Ramsey Road, Shirley, NY 11967, USA

48h, and no obvious degradation and precipitation were observed. The loss rate is less than 5% within the expiration date under appropriate storage condition.

Storage

Avoid repeated freeze/thaw cycles. Store at 2-8 centigrade for one month. Aliquot and store at -80 centigrade for 12 months.

Storage Buffer

20mM Tris, 150mM NaCl, pH8.0, containing 1mM EDTA, 1mM DTT, 0.01% SKL, 5% Trehalose and Proclin300.

Reconstitution

Reconstitute in 20mM Tris, 150mM NaCl (pH8.0) to a concentration of 0.1-1.0 mg/mL. Do not vortex.

GENE INFORMATION

Gene Name

[TMPRSS15 transmembrane serine protease 15 \[Bos taurus \(cattle\) \]](#)

Official Symbol

[TMPRSS15](#)

Synonyms

TMPRSS15; transmembrane serine protease 15; PRSS7; enteropeptidase; enterokinase; protease, serine, 7 (enterokinase); serine protease 7; transmembrane protease, serine 15; EC 3.4.21.9

Gene ID

[282009](#)

mRNA Refseq

[NM_174439](#)

Protein Refseq

[NP_776864](#)

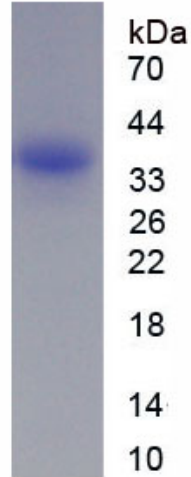
UniProt ID

[P98072](#)

 Tel: 1-631-559-9269 1-516-512-3133

 Email: info@creative-biomart.com  Fax: 1-631-938-8127

 45-1 Ramsey Road, Shirley, NY 11967, USA



Tel: 1-631-559-9269 1-516-512-3133

Email: info@creative-biomart.com Fax: 1-631-938-8127

45-1 Ramsey Road, Shirley, NY 11967, USA