

## Recombinant Bovine Transmembrane Protease, Serine 15

Cat. No. Tmprss15-5347B Lot. No. (See product label)

### SPECIFICATION

|                         |  |
|-------------------------|--|
| <b>Product Overview</b> | Recombinant Bovine Tmprss15 is a single glycosylated polypeptide chain containing 235 amino acids. Its molecular weight is 43000 Dalton.   |
| <b>Species</b>          | Bovine   |
| <b>Source</b>           | P.pastoris   |
| <b>Description</b>      | Tmprss15 (also called enterokinase) is an enzyme produced by cells of the duodenum and involved in human digestion. It is secreted from intestinal glands (the crypts of Lieberkühn) following the entry of ingested food passing from the stomach. Tmprss15 converts trypsinogen (a zymogen) into its active form trypsin, resulting in the subsequent activation of pancreatic digestive enzymes. Tmprss15 is a serine protease (EC 3.4.21.9) consisting of a disulfide-linked 82-140 kDa heavy chain which anchors enterokinase in the intestinal brush border membrane and a 35-62 kDa light chain which contains the catalytic subunit. Tmprss15 is a part of the chymotrypsin-clan of serine proteases, and is structurally similar to these proteins. |
| <b>Form</b>             | Liquid sterile filtered in 50 mM Tris-HCl, pH 8.0 + 0.5 M NaCl + 50% Glycerol.   |
| <b>Molecular Weight</b> | 43.0 kDa   |
| <b>Endotoxin Level</b>  | < 0.1 ng/g   |
| <b>Unit Definition</b>  | One unit is defined as the amount of enzyme needed to cleave 50 µg of fusion protein in 16 hours to 95% completion at 25°C in a buffer containing 25 mM Tris-HCl, pH 7.6 +   |

 Tel: 1-631-559-9269 1-516-512-3133

 Email: [info@creative-biomart.com](mailto:info@creative-biomart.com)  Fax: 1-631-938-8127

 45-1 Ramsey Road, Shirley, NY 11967, USA

50mM NaCl + 2 mM CaCl<sub>2</sub>.

**Storage** Store at -20°C. 1year. Avoid repeated freeze-thaw cycles.

**OfficialSymbol** TMPRSS15

## GENE INFORMATION

**Gene Name** [TMPRSS15 transmembrane protease, serine 15\[ Bos taurus \]](#)

**Synonyms** TMPRSS15;transmembrane protease, serine 15; PRSS7; ENTK; Enterokinase; MGC133046;enterokinase; enteropeptidase; proenterokinase; Enteropeptidase precursor;Serine protease 7; EC 3.4.21.9; protease, serine, 7; serine protease(enterokinase); protease, serine, 7 (enterokinase)

**Gene ID** [282009](#)

**mRNA Refseq** [NM\\_174439](#)

**Protein Refseq** [NP\\_776864](#)

**UniProt ID** P98072

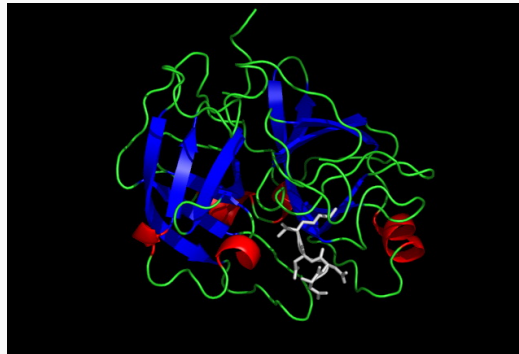
**Function** peptidaseactivity; scavenger receptor activity; serine-type endopeptidase activity

 Tel: 1-631-559-9269 1-516-512-3133

 Email: [info@creative-biomart.com](mailto:info@creative-biomart.com)  Fax: 1-631-938-8127

 45-1 Ramsey Road, Shirley, NY 11967, USA

**Crystal structure  
ofTMPRSS15 with an  
inhibitor.**



 Tel: 1-631-559-9269 1-516-512-3133

 Email: [info@creative-biomart.com](mailto:info@creative-biomart.com)  Fax: 1-631-938-8127

 45-1 Ramsey Road, Shirley, NY 11967, USA