

Recombinant Human TMPRSS2 protein

Cat. No. TMPRSS2-01H Lot. No. (See product label)

SPECIFICATION

Product Overview Recombinant Human TMPRSS2 protein was expressed in E.coli.

Species Human

Source E.coli

ProteinLength 256-489 aa

Description

This gene encodes a protein that belongs to the serine protease family. The encoded protein contains a type II transmembrane domain, a receptor class A domain, a scavenger receptor cysteine-rich domain and a protease domain. Serine proteases are known to be involved in many physiological and pathological processes. This gene was demonstrated to be up-regulated by androgenic hormones in prostate cancer cells and down-regulated in androgen-independent prostate cancer tissue. The protease domain of this protein is thought to be cleaved and secreted into cell media after autocleavage. This protein also facilitates entry of viruses into host cells by proteolytically cleaving and activating viral envelope glycoproteins. Viruses found to use this protein for cell entry include Influenza virus and the human coronaviruses HCoV-229E, MERS-CoV, SARS-CoV and SARS-CoV-2 (COVID-19 virus). Alternatively spliced transcript variants encoding different isoforms have been found for this gene.

Form 25mM Tris, pH 9.0, 250mM NaCl.

Molecular Mass The protein has a calculated MW of 26.1 kDa.

 Tel: 1-631-559-9269 1-516-512-3133

 Email: info@creative-biomart.com  Fax: 1-631-938-8127

 45-1 Ramsey Road, Shirley, NY 11967, USA



AA Sequence	MIVGGESALPGAWPWQVSLHVQNVHVCGGSIITPEWIVTAAHCVEKPLNNPWHWT AFAGILRQSFMYGAGYQVEKVISHPNYDSKTKNNDIALMKLQKPLTFNDLVKPVCL PNPGMMLQPEQLCWISGWGATEEKGKTSEVLNAAKVLLIETQRCNSRYVYDNLITP AMICAGFLQGNVDSCQGDSSGGLVTSKNNIWWLIGDTSWGS GCAKAYRPGVYGNV MVFTDWIYRQMR
--------------------	---

Purity	>90% by SDS-PAGE.
---------------	-------------------

Storage	Store it under sterile conditions at -20 to -80 °C. It is recommended that the protein be aliquoted for optimal storage. Avoid repeated freeze-thaw cycles.
----------------	---

Concentration	0.22 mg/ml
----------------------	------------

GENE INFORMATION

Gene Name	TMPRSS2
------------------	-------------------------

Official Symbol	TMPRSS2
------------------------	-------------------------

Synonyms	PRSS10
-----------------	--------

Gene ID	7113
----------------	----------------------

mRNA Refseq	NM_001135099.1
--------------------	--------------------------------

Protein Refseq	NP_001128571.1
-----------------------	--------------------------------

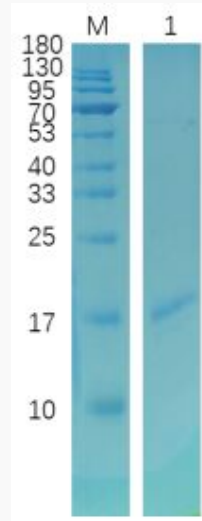
MIM	602060
------------	------------------------

UniProt ID	O15393
-------------------	------------------------

Tel: 1-631-559-9269 1-516-512-3133

Email: info@creative-biomart.com Fax: 1-631-938-8127

45-1 Ramsey Road, Shirley, NY 11967, USA



Reducing 12% SDS-PAGE analysis profile of purified TMPRSS2 (CBB stained)

 Tel: 1-631-559-9269 1-516-512-3133

 Email: info@creative-biomart.com  Fax: 1-631-938-8127

 45-1 Ramsey Road, Shirley, NY 11967, USA