

Recombinant Human TMPRSS2 Protein(106-492aa), MBP&His-Avi-tagged, Biotinylated

Cat. No. TMPRSS2-05943H Lot. No. (See product label)

SPECIFICATION

Product Overview	Biotinylated Recombinant Human TMPRSS2 Protein(106-492aa)(O15393), fused with N-terminal MBP tag and C-terminal His and Avi tag, was expressed in E. coli.
Species	Human
Source	E.coli
ProteinLength	106-492aa
Conjugation/Label	Biotin
Form	If the delivery form is liquid, the default storage buffer is Tris/PBS-based buffer, 5%-50% glycerol. If the delivery form is lyophilized powder, the buffer before lyophilization is Tris/PBS-based buffer, 6% Trehalose, pH 8.0.
Molecular Mass	90.6 kDa
AA Sequence	<p>WKFMGSKCSNSGIECDSSGTCINPSNWCDGVSHCPGGEDENRCVRLYGPNFILQV YSSQRKSWHPVCQDDWNENYGRAACRDMGYKNNFYSSQGIVDDSGSTSFMKLNT SAGNVDIYKKLYHSDACSSKAVVSLRCIACGVNLNSSRQSRIVGGESALPGAWPWQ VSLHVQNVHVCGGSITPEWIVTAAHCVEKPLNNPWHWTAFAGILRQSFMYGAGY QVEKVISHPNYDSKTKNNDIALMKLQKPLTFNDLVKPVCLPNPGMMLQPEQLCWISG WGATEEKGKTSEVLNAAKVLLIETQRCNSRYVYDNLITPAMICAGFLQGNVDSCQGD SGGPLVTSKNNIWWLIGDTSWGS GCAKAYRPGVYGNVMVFTDWIYRQMRADG</p>

 Tel: 1-631-559-9269 1-516-512-3133

 Email: info@creative-biomart.com  Fax: 1-631-938-8127

 45-1 Ramsey Road, Shirley, NY 11967, USA

Purity	Greater than 85% as determined by SDS-PAGE.
Storage	Store at -20°C/-80°C upon receipt, aliquoting is necessary for mutiple use. Avoid repeated freeze-thaw cycles.
Reconstitution	It is recommended that sterile water be added to the vial to prepare a stock solution of 0.2 ug/ul. Centrifuge the vial at 4°C before opening to recover the entire contents.
Conjugation	Biotin

GENE INFORMATION

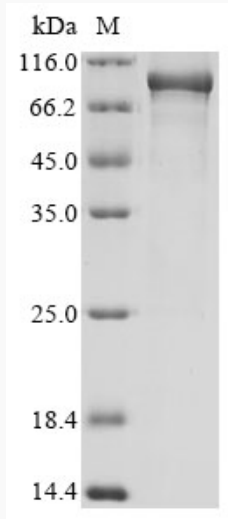
Gene Name	TMPRSS2 transmembrane protease, serine 2 [Homo sapiens]
Official Symbol	TMPRSS2
Synonyms	TMPRSS2; transmembrane protease, serine 2; transmembrane protease serine 2; PRSS10; epitheliasin; serine protease 10; PP9284; FLJ41954;
Gene ID	7113
mRNA Refseq	NM_001135099
Protein Refseq	NP_001128571
MIM	602060
UniProt ID	O15393

 Tel: 1-631-559-9269 1-516-512-3133

 Email: info@creative-biomart.com  Fax: 1-631-938-8127

 45-1 Ramsey Road, Shirley, NY 11967, USA

SDS-PAGE



 Tel: 1-631-559-9269 1-516-512-3133

 Email: info@creative-biomart.com  Fax: 1-631-938-8127

 45-1 Ramsey Road, Shirley, NY 11967, USA