

Recombinant Human TMPRSS2 Protein, His-tagged

Cat. No. TMPRSS2-086H Lot. No. (See product label)

SPECIFICATION

Product Overview	Recombinant protein of the extracellular domain (M109-G492) of human transmembrane protease serine 2 (TMPRSS2), with an c-terminal polyhistidine tag was expressed in human cells.
Species	Human
Source	Human Cells
ProteinLength	109-492 a.a.
Description	<p>This gene encodes a protein that belongs to the serine protease family. The encoded protein contains a type II transmembrane domain, a receptor class A domain, a scavenger receptor cysteine-rich domain and a protease domain. Serine proteases are known to be involved in many physiological and pathological processes. This gene was demonstrated to be up-regulated by androgenic hormones in prostate cancer cells and down-regulated in androgen-independent prostate cancer tissue. The protease domain of this protein is thought to be cleaved and secreted into cell media after autocleavage. Alternatively spliced transcript variants encoding different isoforms have been found for this gene.</p>
Molecular Mass	49 kDa
Endotoxin	Endotoxin level is < 0.1 ng/μg of protein (< 1 EU /μg)
Purity	>90% by SDS-PAGE gel and Coomassie Blue staining

 Tel: 1-631-559-9269 1-516-512-3133

 Email: info@creative-biomart.com  Fax: 1-631-938-8127

 45-1 Ramsey Road, Shirley, NY 11967, USA

Applications Antigen, Western, ELISA and other in vitro binding or in vivo functional assays, and protein-protein interaction studies; For research & development use only!

Storage Buffer Purified protein formulated in a sterile solution of PBS buffer, pH7.2, without any preservatives

GENE INFORMATION

Gene Name [TMPRSS2 transmembrane serine protease 2 \[Homo sapiens \(human\) \]](#)

Official Symbol [TMPRSS2](#)

Synonyms TMPRSS2; transmembrane serine protease 2; PRSS10; transmembrane protease serine 2; epitheliasin; serine protease 10; transmembrane protease, serine 2; EC 3.4.21.-

Gene ID [7113](#)

mRNA Refseq [NM_005656](#)

Protein Refseq [NP_005647](#)

MIM [602060](#)

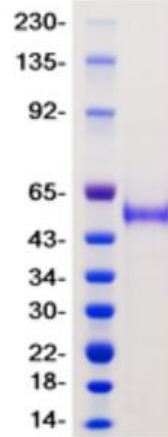
UniProt ID [O15393](#)

 Tel: 1-631-559-9269 1-516-512-3133

 Email: info@creative-biomart.com  Fax: 1-631-938-8127

 45-1 Ramsey Road, Shirley, NY 11967, USA

SDS-PAGE



 Tel: 1-631-559-9269 1-516-512-3133

 Email: info@creative-biomart.com  Fax: 1-631-938-8127

 45-1 Ramsey Road, Shirley, NY 11967, USA