

Recombinant Human TMPRSS2 Protein

Cat. No. TMPRSS2-123H **Lot. No.** (See product label)

SPECIFICATION

Product Overview	Recombinant Human TMPRSS2 Protein was expressed in E. coli.
Species	Human
Source	E.coli
Description	<p>This gene encodes a protein that belongs to the serine protease family. The encoded protein contains a type II transmembrane domain, a receptor class A domain, a scavenger receptor cysteine-rich domain and a protease domain. Serine proteases are known to be involved in many physiological and pathological processes. This gene was demonstrated to be up-regulated by androgenic hormones in prostate cancer cells and down-regulated in androgen-independent prostate cancer tissue.</p> <p>The protease domain of this protein is thought to be cleaved and secreted into cell media after autocleavage. This protein also facilitates entry of viruses into host cells by proteolytically cleaving and activating viral envelope glycoproteins. Viruses found to use this protein for cell entry include Influenza virus and the human coronaviruses HCoV-229E, MERS-CoV, SARS-CoV and SARS-CoV-2 (COVID-19 virus). Alternatively spliced transcript variants encoding different isoforms have been found for this gene.</p>
Form	25mM Tris, pH 9.0, 250mM NaCl.
Molecular Mass	26.1 kDa
AA Sequence	MIVGGESALPGAWPWQVSLHVQNVHVCGGSIITPEWIVTAAHCVEKPLNNPWHWT

 Tel: 1-631-559-9269 1-516-512-3133

 Email: info@creative-biomart.com  Fax: 1-631-938-8127

 45-1 Ramsey Road, Shirley, NY 11967, USA



AFAGILRQSFMFYGAGYQVEKVISHPNYDSKTKNNDIALMKLQKPLTFNDLVKPVCL
PNPGMMLQPEQLCWISGWGATEEKGKTSEVLNAAKVLLIETQRCNSRYVYDNLITP
AMICAGFLQGNVDSCQGDSSGGLVTSKNNIWWLIGDTSWGSQCAKAYRPGVYGNV
MVFTDWIYRQMR

Storage Store it under sterile conditions at -20 to -80 centigrade. It is recommended that the protein be aliquoted for optimal storage. Avoid repeated freeze-thaw cycles.

Concentration 0.22 mg/ml

GENE INFORMATION

Gene Name [TMPRSS2 transmembrane serine protease 2 \[Homo sapiens \(human\) \]](#)

Official Symbol [TMPRSS2](#)

Synonyms [PRSS10](#)

Gene ID [7113](#)

mRNA Refseq [NM_001135099](#)

Protein Refseq [NP_001128571](#)

MIM [602060](#)

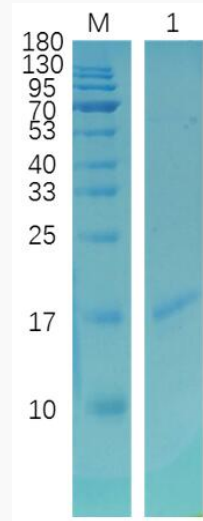
UniProt ID [O15393](#)

Tel: 1-631-559-9269 1-516-512-3133

Email: info@creative-biomart.com Fax: 1-631-938-8127

45-1 Ramsey Road, Shirley, NY 11967, USA

SDS-PAGE



Reducing 12% SDS-PAGE analysis profile of purified TMPRSS2 (CBB stained).

 Tel: 1-631-559-9269 1-516-512-3133

 Email: info@creative-biomart.com  Fax: 1-631-938-8127

 45-1 Ramsey Road, Shirley, NY 11967, USA