

Recombinant Human TMPRSS4 Protein, His-tagged

Cat. No. TMPRSS4-337H Lot. No. (See product label)

SPECIFICATION

Product Overview	Recombinant Human TMPRSS4(Lys54~Leu437) fused with His tag at N-terminal was expressed in E. coli.
Species	Human
Source	E.coli
ProteinLength	Lys54~Leu437
Description	This gene encodes a member of the serine protease family. Serine proteases are known to be involved in a variety of biological processes, whose malfunction often leads to human diseases and disorders. This gene was identified as a gene overexpressed in pancreatic carcinoma. The encoded protein is membrane bound with a N-terminal anchor sequence and a glycosylated extracellular region containing the serine protease domain. Multiple transcript variants encoding different isoforms have been found for this gene.
Form	PBS, pH7.4, containing 0.01% SKL, 1mM DTT, 5% Trehalose and Proclin300.
Molecular Mass	46.1kDa
Endotoxin	<1.0EU per 1g (determined by the LAL method)
Purity	> 92%

 Tel: 1-631-559-9269 1-516-512-3133

 Email: info@creative-biomart.com  Fax: 1-631-938-8127

 45-1 Ramsey Road, Shirley, NY 11967, USA

Applications	Positive Control; Immunogen; SDS-PAGE; WB. If bio-activity of the protein is needed, please check active protein.
Stability	The thermal stability is described by the loss rate. The loss rate was determined by accelerated thermal degradation test, that is, incubate the protein at 37 centigrade for 48h, and no obvious degradation and precipitation were observed. The loss rate is less than 5% within the expiration date under appropriate storage condition.
Storage	Avoid repeated freeze/thaw cycles. Store at 2-8 centigrade for one month. Aliquot and store at -80 centigrade for 12 months.
Reconstitution	Reconstitute in PBS or others.

GENE INFORMATION

Gene Name	TMPRSS4 transmembrane protease, serine 4 [Homo sapiens]
Official Symbol	TMPRSS4
Synonyms	TMPRSS4; transmembrane protease, serine 4; transmembrane protease serine 4; membrane type serine protease 2; MT SP2; TMPRSS3; transmembrane serine protease 3; type II membrane serine protease; channel-activating protease 2; membrane-type serine protease 2; CAPH2; MT-SP2;
Gene ID	56649
mRNA Refseq	NM_001083947
Protein Refseq	NP_001077416
MIM	606565

 Tel: 1-631-559-9269 1-516-512-3133

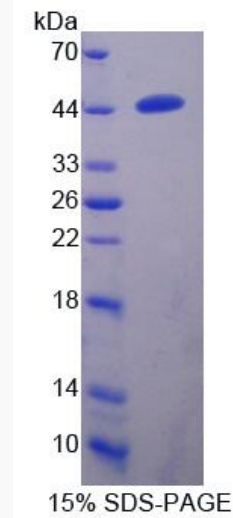
 Email: info@creative-biomart.com  Fax: 1-631-938-8127

 45-1 Ramsey Road, Shirley, NY 11967, USA



UniProt ID

Q9NRS4



Tel: 1-631-559-9269 1-516-512-3133

Email: info@creative-biomart.com Fax: 1-631-938-8127

45-1 Ramsey Road, Shirley, NY 11967, USA