

# Recombinant Human TMPRSS4 Protein, Myc/DDK-tagged, C13 and N15-labeled

**Cat. No.** TMPRSS4-6343H    **Lot. No.** (See product label)

## SPECIFICATION

### Product Overview

TMPRSS4 MS Standard C13 and N15-labeled recombinant protein (NP\_001077416) with a C-terminal MYC/DDK tag, was expressed in HEK293 cells.

### Species

Human

### Source

HEK293

### Description

This gene encodes a member of the serine protease family. Serine proteases are known to be involved in a variety of biological processes, whose malfunction often leads to human diseases and disorders. This gene was identified as a gene overexpressed in pancreatic carcinoma. The encoded protein is membrane bound with a N-terminal anchor sequence and a glycosylated extracellular region containing the serine protease domain. Multiple transcript variants encoding different isoforms have been found for this gene.

### Molecular Mass

47.5 kDa

### AA Sequence

MLQDPDSDQPLNSLDVKPLRKPRIPMETFRKVGIPIIIALLSLASIIIVVVLKIVILDKYYFL  
CGQPLHFIPRKQLCDGELDCPLGEDEEHCVKSFPEGPAVAVRLSKDRSTLQVLDSA  
TGNWFSACFDNFTEALAEACRQMGYSRAVEIGPDQDLDDVVEITENSQELRMRNSS  
GPCLSGSLVSLHCLACGKSLKTPRVVGGEEASVDSWPWQVSIQYDKQHVCSSIL  
DPHWVLTAAHCFRKHTDVFNWKVRAGSDKLGSPSLAVAKIIIEFNPMYPKDNDIAL  
MKLQFPLTFSGTVRPICLPFFDEELTPATPLWIIGWGFTKQNGGKMSDILLQASVQVI

 Tel: 1-631-559-9269    1-516-512-3133

 Email: [info@creative-biomart.com](mailto:info@creative-biomart.com)     Fax: 1-631-938-8127

 45-1 Ramsey Road, Shirley, NY 11967, USA

DSTRCNADDAYQGEVTEKMMMCAGIPEGGVDTCCQGDSSGGLMYQSDQWHVVGIVS  
 WGYGCGGPSTPGVYTKVSAYLNWIYNVWKAELTRTRPLEQKLISEEDLAANDILDYK  
 DDDDKV

**Purity** > 80% as determined by SDS-PAGE and Coomassie blue staining

**Stability** Stable for 3 months from receipt of products under proper storage and handling conditions.

**Storage** Store at -80 centigrade. Avoid repeated freeze-thaw cycles.

**Concentration** 50 µg/mL as determined by BCA

**Storage Buffer** 100 mM glycine, 25 mM Tris-HCl, pH 7.3.

## GENE INFORMATION

**Gene Name** [TMPRSS4 transmembrane serine protease 4 \[ Homo sapiens \(human\) \]](#)

**Official Symbol** [TMPRSS4](#)

**Synonyms** TMPRSS4; transmembrane protease, serine 4; transmembrane protease serine 4; membrane type serine protease 2; MT SP2; TMPRSS3; transmembrane serine protease 3; type II membrane serine protease; channel-activating protease 2; membrane-type serine protease 2; CAPH2; MT-SP2;

**Gene ID** [56649](#)

**mRNA Refseq** [NM\\_001083947](#)

**Protein Refseq** [NP\\_001077416](#)

 Tel: 1-631-559-9269 1-516-512-3133

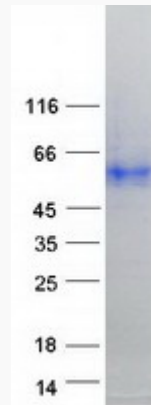
 Email: [info@creative-biomart.com](mailto:info@creative-biomart.com)  Fax: 1-631-938-8127

 45-1 Ramsey Road, Shirley, NY 11967, USA

**MIM** 606565

**UniProt ID** Q9NRS4

**SDS-PAGE**



 Tel: 1-631-559-9269 1-516-512-3133

 Email: [info@creative-biomart.com](mailto:info@creative-biomart.com)  Fax: 1-631-938-8127

 45-1 Ramsey Road, Shirley, NY 11967, USA